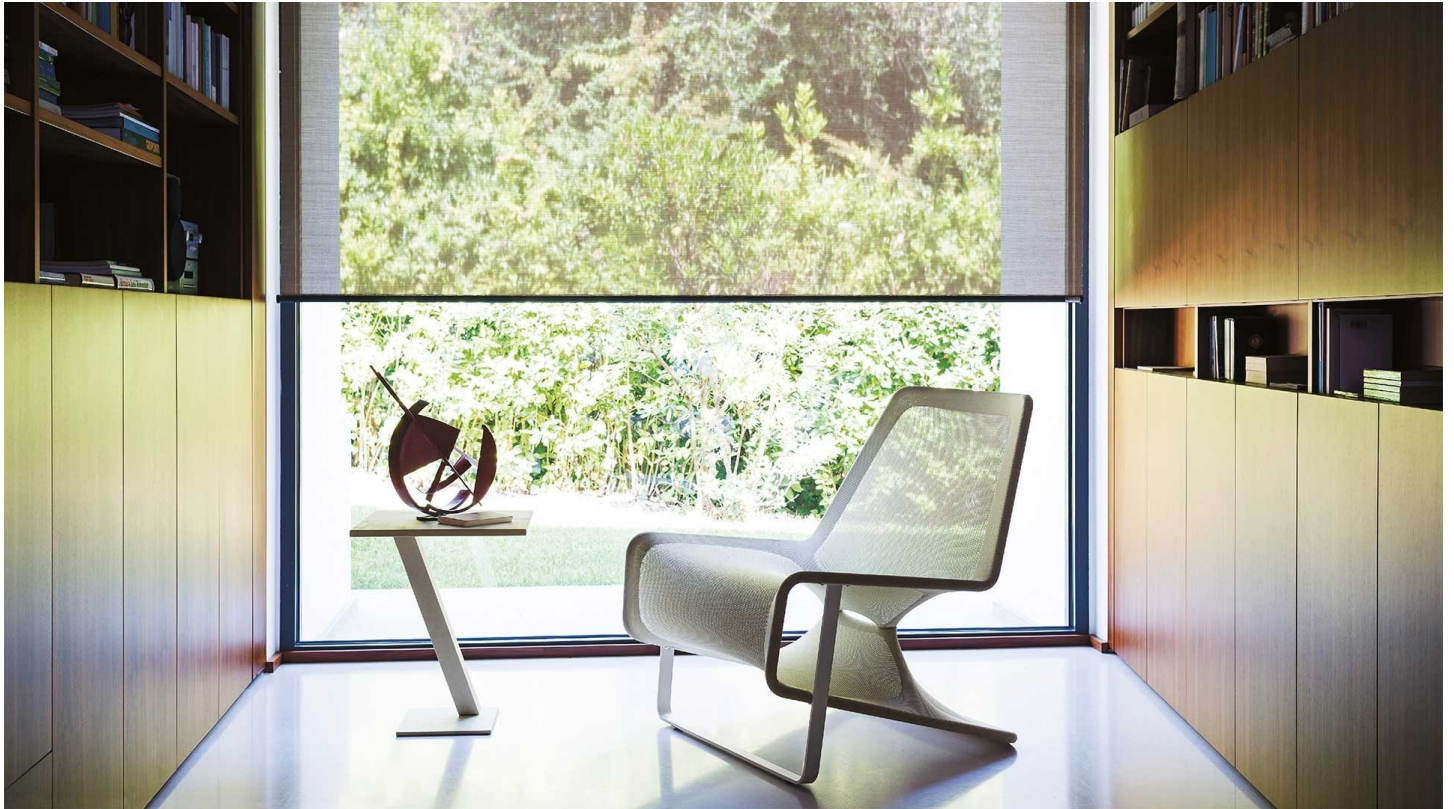


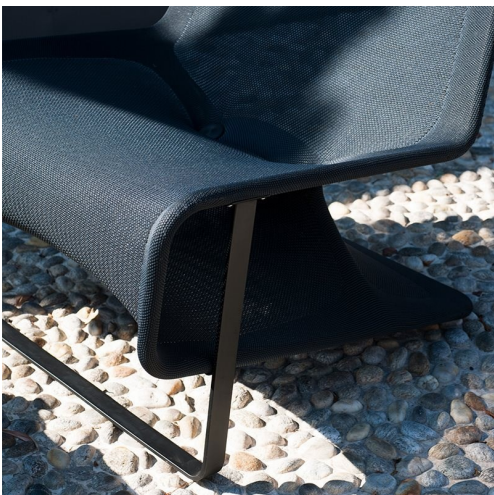
DESALTO



Aria

Atelier oï · 2019

Aria is a long chair with an ethereal and delicate, almost immaterial silhouette. It is composed of an extremely resistant and elastic mesh that wraps the metal frame in tubular steel like a sock, offering a wide seat without the traditional padding.



Available models

Without the traditional upholstery, the silhouette appears lighter.



Lounge Chair

width 83 cm
depth 100 cm
total height 88 cm

Pouff

width 80 cm
depth 52 cm
total height 42 cm

Finishing

Tessuto Elastico

Elastic Net



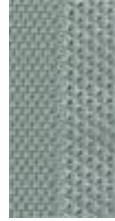
S10
CENERE



S11 NOTTE



S12 BEIGE



S13 SALVIA



S14
CORALLO