

DESALTO



Fourmore

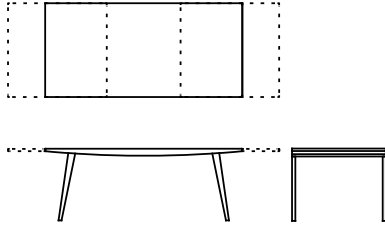
Gordon Guillaumier · 2020

The extendible dining table is always a design challenge in combining the balance of technical and formal functioning. Fourmore makes a synthesis of this balance with a simple gesture of the mechanism, together with aesthetic and linear rigour, where the table maintains its proportion, both in the closed and extended versions.



Available models

Table with frame structure made of 10 mm laser-cut steel sheet, CNC-milled top and extension. Mechanical details in moulded plastic on specific design. Sliding systems on aluminium tracks with self-lubricating runners.



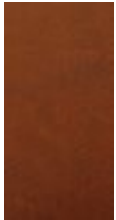
height
73 cm

dimension
90 x 180 (250) cm
95 x 200 (275) cm

Finishing

Top

Handcraft finishes



D60
MATTONE
RED
CONCRETE



D65 LUNA
GREY
CONCRETE



D66 BLACK
CONCRETE



D61 WHITE
CONCRETE



D55 REALE
BLUE
CONCRETE



D57 OCRA
CONCRETE



D56
ARDESIA
CONCRETE



D58
GHIACCIO
CONCRETE

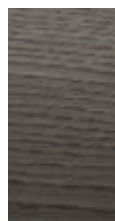


D59 CACAO
CONCRETE

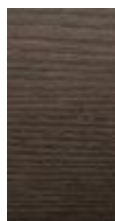
Wood



C88
NATURAL
OAK



C76 OAK
GRAFITE



C68 OAK
MORO



C95
WALNUT
CANALETTO



C14 OAK
BLACK
LACQUERED

Frame

Lacquers



B13
SABBIA



B42
GRAFITE



B59 NERO
OPACO



B62
BIANCO
OPACO

