

DESALTO



L 45

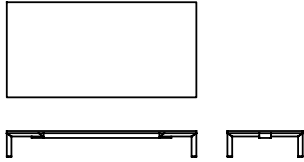
Guglielmo Poletti · 2020

The configuration of the angle varies according to the point of view, thanks to the alternation of surfaces and edges, which intersecting with inclinations of 90° and 45° interrupt the coplanar alignment between leg and top.



Available models

Tables and small tables collection with angular steel legs, 6 mm thickness, CNC-machined. Frame in angular steel with 5 mm thickness, CNC-machined. Top with wood, fenix or hand-spread concrete finishes.



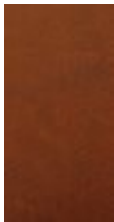
height
25 cm

dimension
130 x 65 cm
110 x 110 cm

Finishing

Top

Handcraft finishes



D60
MATTONE
RED
CONCRETE



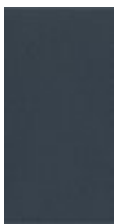
D65 LUNA
GREY
CONCRETE



D66 BLACK
CONCRETE



D61 WHITE
CONCRETE



D55 REALE
BLUE
CONCRETE



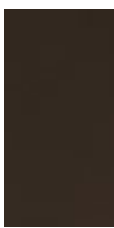
D57 OCRA
CONCRETE



D56
ARDESIA
CONCRETE



D58
GHIACCIO
CONCRETE

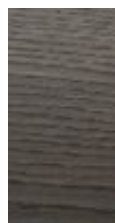


D59 CACAO
CONCRETE

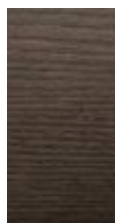
Wood



C88
NATURAL
OAK



C76 OAK
GRAFITE



C68 OAK
MORO

Laminate

D40 FENIX
BIANCO



D41 FENIX
NERO



D42 FENIX
GRIGIO

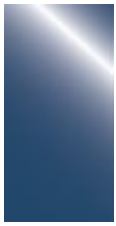


D43 FENIX
BORDEAUX



D44 FENIX
BLU NOTTE

Glossy Polyester



L50 REALE
BLUE



L51
ARDESIA



L52 CACAO



L53 NERO

Frame

Lacquers



B13
SABBIA



B42
GRAFITE



B59 NERO
OPACO



B62
BIANCO
OPACO

Metals



A21
OSSIDIANA
SPAZZOLATO



A27
TITANIUM