

# DESALTO



## Mun

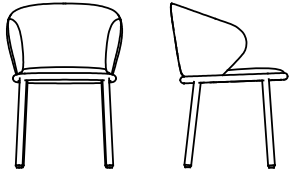
Mario Ferrarini - 2019

Mun echoes the perfect shape of a full moon, a continuous, circular, clear mark which can be personalised with the Desalto colours to compose in total freedom rooms that are different each time, possibly imagining a table where the uniqueness of each guest echoes the diversity of the colour of each seat.



## Available models

Upholstered seat with fabric covers and ø30 mm tubular steel frame.



Mun

width 54 cm  
depth 56 cm  
total height 78 cm  
seat height 49 cm

## Finishing

### Struttura

#### Lacquers



B13  
SABBIA



B22  
MARRONE  
BUNGEE



B42  
GRAFITE



B54  
PETROLIO



B56  
RUGGINE



B59 NERO  
OPACO



B62  
BIANCO  
OPACO



B70 ROSSO  
LAMPONE

#### Metals



A18  
OSSIDIANA  
OPACO



A03  
CROMO



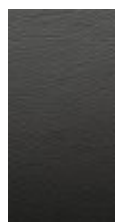
A27  
TITANIUM

### Seduta

#### Leather



M50  
BIANCO



M52 TESTA  
DI MORO



M53 NERO



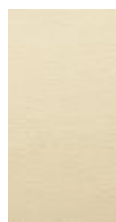
M55 ROSSO



M58  
BORDEAUX



M59  
SABBIA



M61 PANNA



M69  
ZAFFERANO

## Leather - NUVOLA



M73 NEVE



M74 BRUNO



M75 OASI



M76  
TABACCO



M77 NERO



M78  
CAMELIA



M79 KAKI

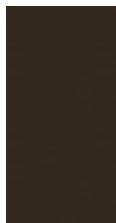


M80  
BORDEAUX

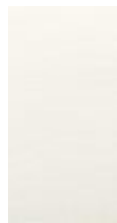


M81  
ANTRACITE

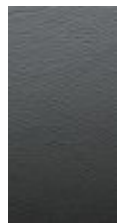
## Eco Leather



Q13 CAFFE



R02  
BIANCO



R06  
ANTRACITE



R07 ECRU



R18 ROSSO



R19  
AMARANTO

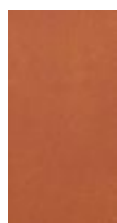


R29 NERO

## Eco Leather- GRAIN



R45  
SAHARA



R40  
COGNAC



R41 FUMO



R42  
TABACCO



R43  
ARDESIA



R44  
CARBONE

Eco Leather - GLOVE



R46 LATTE



R48 PIETRA



R49 PELTRO



R51 BISTRO



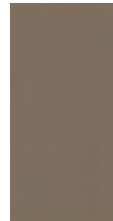
R52 MORO



R53 BRUNO



R54 CUIOIO



R55  
CANNELLA



R56 OLIO



R57  
GRANATA

Fabric - DANDY (Cat. A)



H65 CORDA



H66 ECRU



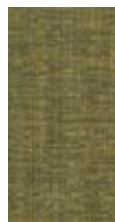
H67  
TORTORA



H68  
MELOGRANO



H69 TORBA



H70  
PAGLIERINO



H71 GIADA



H72  
TURCHESE



H73 DENIM



H74  
ANTRACITE



H76 FANGO

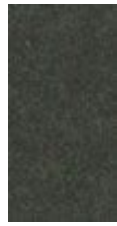


H75 FUMO

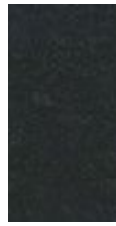
Fabric LODEN (Cat. A)



H77 IUTA



H78 MOCA



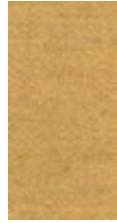
H79 PECE



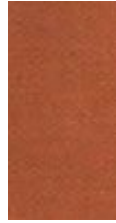
H80  
GRANITO



H81 BRINA



H82  
BANANA



H83  
ARAGOSTA



H84  
VERMIGLIO



H85 BOSCO



H86  
PISTACCHIO



H87 CIANO

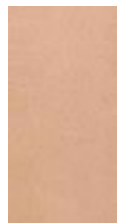


H88  
INCHIOSTRO

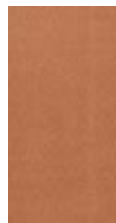
Fabric SOFTY (Cat. B)



H27 GESSO



H28 CIPRIA



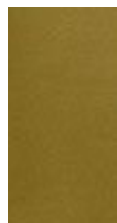
H29  
MARSALA



H36  
PAPAYA



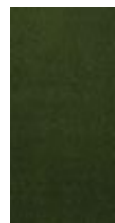
H37  
NOCCIOLA



H38 CEDRO



H39  
CILIEGIA



H46  
MUSCHIO



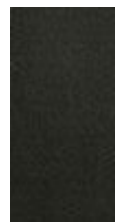
H47  
PAVONE



H48  
OCEANO



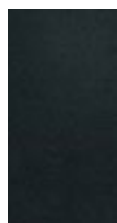
H49 VISIONE



H51 CAFFÈ



H52 TITANIO



H53  
ARDESIA

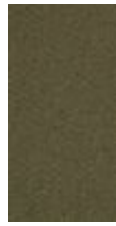
Fabric - MESSENGER (Cat. C)



T86 CENERE



T87  
CANAPA



T88  
TORTORA



T89 ROSA  
PASTELLO



T90  
SENAPE



T91  
TERRACOTTA



T92  
SCARLATTO



T93  
FORESTA



T94  
OTTANIO



T95  
PRUSSIA



T96  
CARBONE



T97  
ACCIAIO



T98 NERO