

# DESALTO



## Sand Air

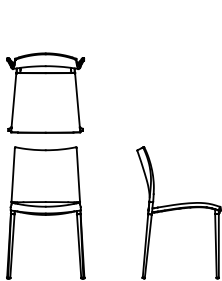
Pocci + Dondoli - 2003

Ultralight, comfortable and sophisticated mesh enhances the unique characteristics that have made the Sand design famous. The PVC-coated nylon mesh ensures excellent breathability. Available in different colours.



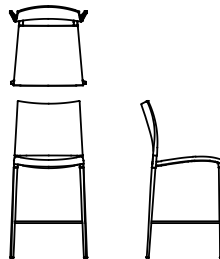
## Available models

Stacking chair with or without armrests, die-cast aluminium frame. Seat and back in mesh made of polyester thread covered with PVC (Sand Air) and PVC + hemp (Sand Air Canatex / Duo) in different colours. Lacquered frame versions also available for outdoor use. The barstool (not stackable) has the same characteristics as the chair.



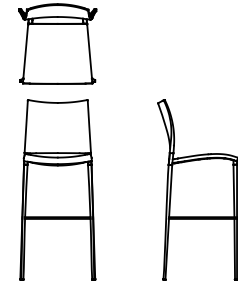
Sand Air

width 47 cm  
depth 54 cm  
total height 82 cm  
seat height 45 cm



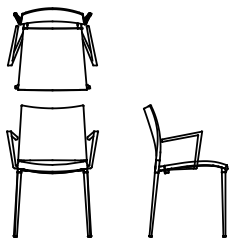
Sand Air stool

width 47 cm  
depth 54 cm  
total height 99 cm  
seat height 64 cm



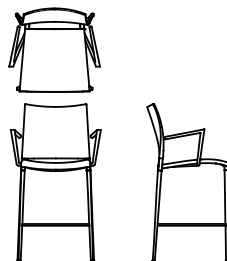
Sand Air high stool

width 47 cm  
depth 54 cm  
total height 115 cm  
seat height 80 cm



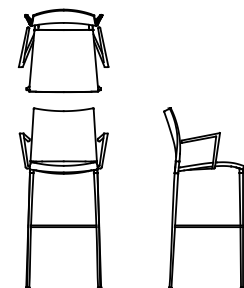
Sand Air  
with armrest

width 53,5 cm  
depth 54 cm  
total height 82 cm  
seat height 45 cm  
arm rest height 63 cm



Sand Air stool  
with armrest

width 53,5 cm  
depth 54 cm  
total height 99 cm  
seat height 64 cm  
arm rest height 82 cm



Sand Air high stool  
with armrest

width 53,5 cm  
depth 54 cm  
total height 115 cm  
seat height 80 cm  
arm rest height 98 cm

## Finishing

### Structure

#### Lacquers



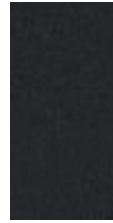
B13  
SABBIA



B22  
MARRONE  
BUNGEE



B41  
TORTORA



B42  
GRAFITE



B59 NERO  
OPACO



B62  
BIANCO  
OPACO

#### Metals



A18  
OSSIDIANA  
OPACO



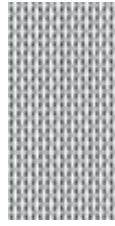
A08  
ALLUMINIO  
LUCIDO

### Seat

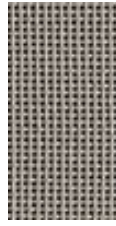
Net



S03  
BIANCO



S07  
MELANGE



S21  
CANATEX  
TORTORA



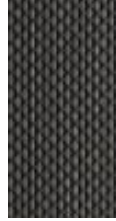
S22  
CANATEX  
SABBIA



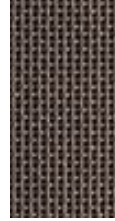
S24  
CANATEX  
NERO



S27 GRIGIO  
PIOMBO



S28 GRIGIO  
GHISA



S31  
CANATEX  
MARRONE  
SCURO



S23  
CANATEX  
PAGLIA



S30  
CANATEX  
MARRONE  
MEDIO