

DESALTO



Sand Light

Pocci + Dondoli · 2010

Lightness is the style trait of Sand Light, light in its look and its weight thanks to a die-cast aluminium frame and a polyester mesh seat and backrest.

Sand Light embodies a successful combination of structural stability and understated elegance.



Available models

Stacking chair with or without armrests, die-cast aluminium frame. Seat and back with mesh made of polyester thread covered in PVC (Sand Air) and PVC + hemp (Sand Air Canatex / Duo) in different colours. Lacquered versions also available for outdoor use.



Sand light

width 48 cm
depth 55 cm
total height 81 cm
seat height 47 cm

Sand light with armrest

width 51 cm
depth 55 cm
total height 81 cm
seat height 47 cm
arm rest height 66,5 cm

Finishing

Structure

Lacquers



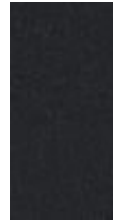
B13
SABBIA



B22
MARRONE
BUNGEE



B41
TORTORA



B42
GRAFITE



B59 NERO
OPACO



B62
BIANCO
OPACO

Metals



A18
OSSIDIANA
OPACO



A03
CROMO



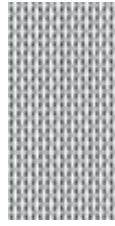
A27
TITANIUM

Seat

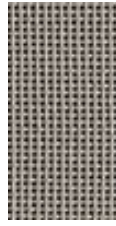
Net



S03
BIANCO



S07
MELANGE



S21
CANATEX
TORTORA



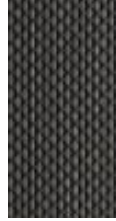
S22
CANATEX
SABBIA



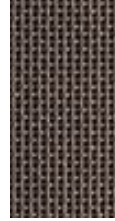
S24
CANATEX
NERO



S27 GRIGIO
PIOMBO



S28 GRIGIO
GHISA



S31
CANATEX
MARRONE
SCURO



S01 NERO



S23
CANATEX
PAGLIA



S30
CANATEX
MARRONE
MEDIO

