

DESALTO



Element

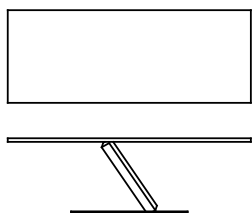
Tokujiin Yoshioka · 2013

Tavolo icona, Element è emblema di purezza e poesia, sintesi della cifra progettuale del visionario designer Tokujiin Yoshioka. Il sostegno centrale, in bilico tra i due elementi orizzontali, sfida la gravità, sospesa tra terra e cielo e tra passato e futuro.



Modelli disponibili

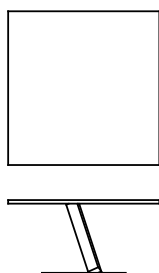
Tavolo smontabile con struttura in acciaio, piani in metallo o MDF, nelle finiture laccate o materiche spatolate a mano.



Element

altezza
72 cm

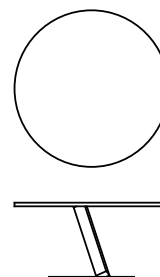
misure
200 x 99 cm
240 x 99 cm



Element

altezza
72 cm

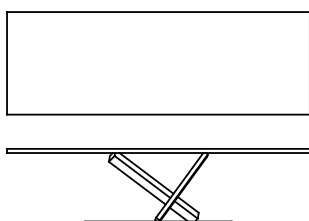
misure
148 x 148 cm



Element

altezza
72 cm

misure
Ø 140 cm
Ø 160 cm



Element

altezza
72 cm

misure
300 x 99 cm

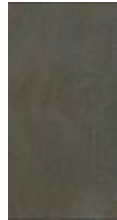
Finiture

Basamento

Spatolati Materici



A90 METAL
GREY



A92 METAL
BRONZE



D62 COURT
GREY



D63
BIANCO
DUOMO



D55
CEMENTO
BLU REALE



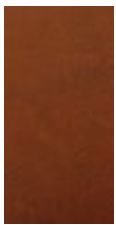
D56
CEMENTO
ARDESIA



D57
CEMENTO
OCRA



D58
CEMENTO
GHIACCIO



D60
CEMENTO
ROSSO
MATTONE



D61
CEMENTO
BIANCO



D65
CEMENTO
GRIGIO
LUNA



D59
CEMENTO
CACAO



D66
CEMENTO
NERO

Laccature



A66
LACCATO
FERRO
GREZZO



B13
SABBIA



B22
MARRONE
BUNGEE



B59 NERO
OPACO



B62
BIANCO
OPACO



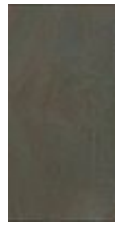
B70 ROSSO
LAMPONE

Top

Spatolati Materici



A90 METAL
GREY



A92 METAL
BRONZE



D62 COURT
GREY



D63
BIANCO
DUOMO



D55
CEMENTO
BLU REALE



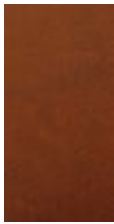
D56
CEMENTO
ARDESIA



D57
CEMENTO
OCRA



D58
CEMENTO
GHIACCIO



D60
CEMENTO
ROSSO
MATTONE



D61
CEMENTO
BIANCO



D65
CEMENTO
GRIGIO
LUNA



D59
CEMENTO
CACAO



D66
CEMENTO
NERO

Laccature



A66
LACCATO
FERRO
GREZZO



B13
SABBIA



B22
MARRONE
BUNGEE



B59 NERO
OPACO



B62
BIANCO
OPACO



B70 ROSSO
LAMPONE

