
Connection

Massimo Castagna
2013



Connection

Massimo Castagna , 2013

Tavolino in cristallo extralight. Struttura in ottone brunito a mano. L'ottone risulta naturalmente macchiato e disomogeneo. Questa lavorazione artigianale conferisce ad ogni pezzo una particolare unicità, rendendolo esclusivo.

Coffee table with extralight glass. Structure in hand burnished brass. The hand burnished brass finish looks naturally spotted and irregular. Due to this craftmade processing, each product is unique and exclusive.

Dimensioni / Sizes

Cm (Ø x H)

100 x 32

130 x 32

50 x 46,5

70 x 39,5

107 x 70 x 46,5 Double

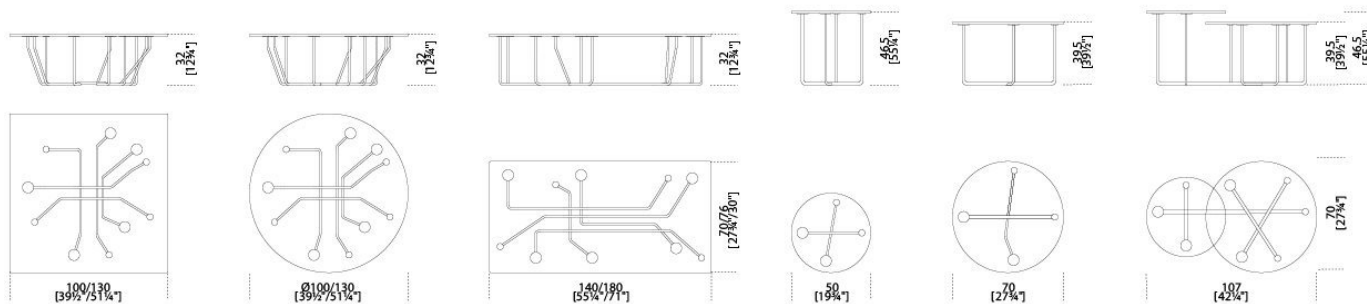
Cm (L x P x H)

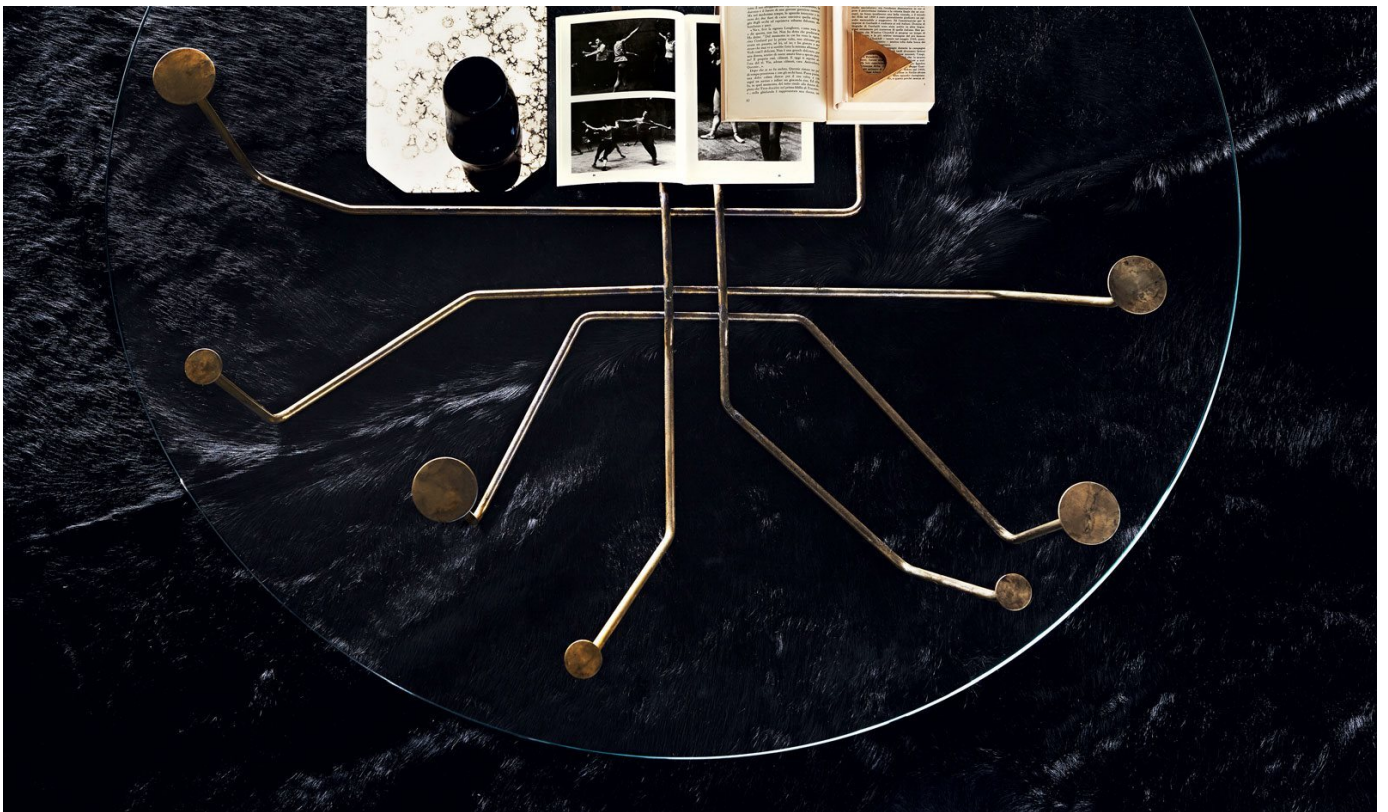
100 x 100 x 32

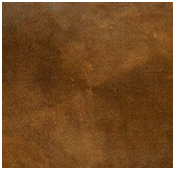
130 x 130 x 32

140 x 70 x 32

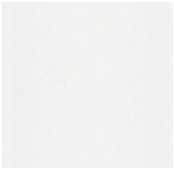
180 x 76 x 32





Metallo / Metal

*Ottone brunito
a mano
Hand
burnished
brass*

Cristallo / Glass

*Extralight
Extralight*
