

Finiture **EN Finishes**

Inari

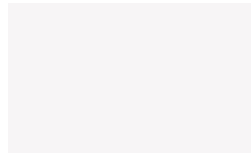
Designer
Philippe Tabet

PIANCA

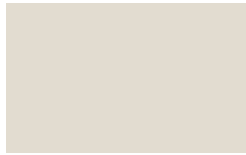
PIANCA

Struttura

Laccato Opaco poro aperto



Bianco



Seta



Ecrù



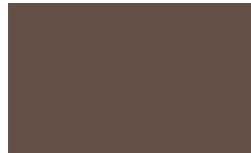
Corda



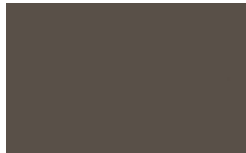
Crema



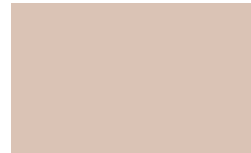
Cotto



Moka



Fango



Cipria



Mattone



Cannella



Malva



Salvia



Senape



Orzo



Muschio



Polvere



Indaco



Ardesia



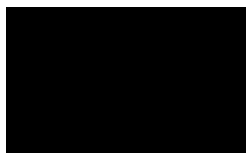
Bosco



Cenere



Lavagna



Nero

Essenze



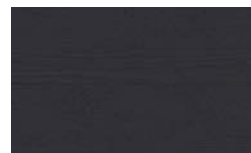
Borgogna



Canaletto



Frassino Lino



PIANCA

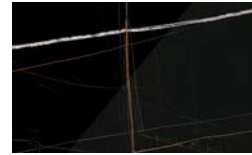
Frassino Miele



Frassino Moro



Frassino Antracite

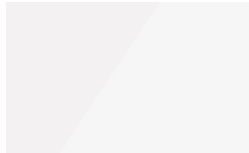


Frassino Nero



Vetro Marmo

Calacatta



Amani



Sahara

Vetro Laccato

Verniciato Bianco



Verniciato Seta



Vetro Laccato Metallico

Verniciato 110 Oliva



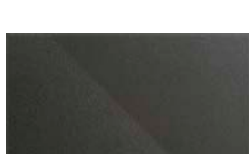
Verniciato 115 Bosco



Verniciato 120 Mirto



Verniciato 130 Cognac



Verniciato 135 Bronzo



Verniciato 138
Champagne



Verniciato 150 Titanio



Piano

Essenze

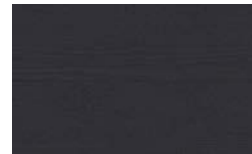
Borgogna



Canaletto



Frassino Lino



Frassino Miele



Frassino Moro



Frassino Antracite



Frassino Nero

PIANCA

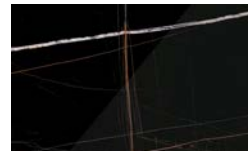
Vetro Marmo



Calacatta

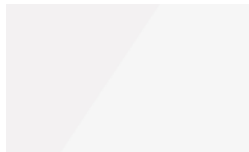


Amani



Sahara

Vetro Laccato

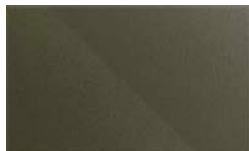


Verniciato Bianco

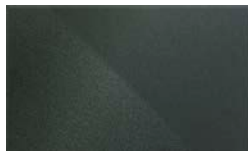


Verniciato Seta

Vetro Laccato Metallico



Verniciato 110 Oliva



Verniciato 115 Bosco



Verniciato 120 Mirto



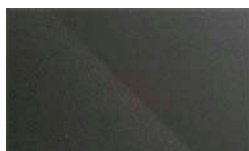
Verniciato 130 Cognac



Verniciato 135 Bronzo



Verniciato 138
Champagne



Verniciato 150 Titanio

* Opaco o Lucido, ^{EN} Matt or High Gloss

** Solo per telaio anta Milano, ^{EN} Only for Milano door frame

° Alaska Laccato, ^{EN} Lacquered Alaska

PIANCA

PIANCA

PIANCA

Via dei Cappellari, 20
31018 – Gaiarine, Treviso
ITALY
T +39 0434 756911
F +39 0434 75330
info@pianca.com
pianca.com
p.iva IT 01682580269

Vietata la riproduzione a qualsiasi scopo.
Campione promozionale gratuito non destinato alla vendita.
Escluso iva art.2 comma 3 D.P.R. 633/72 – esonerato da documento di trasporto art.4 punto 6 D.P.R. 627/78
Pianca si riserva di apportare, senza preavviso, le modifiche necessarie al fine di migliorare il funzionamento e la qualità dei propri prodotti.
Si prega di consultare i listini e relativi aggiornamenti per aspetti tecnici e dimensionali. Colori e materiali hanno valore puramente rappresentativo.
EN Pianca reserves the right to apply the necessary modifications without notice, in order to improve the performance and quality of its products.
Please see the pricelists and relevant updates for technical data and dimensions. Colours and materials serve merely as an example.