

# AFRODITE

SCRITTOIO | WRITING DESK

Design C. Ballabio

2015



# AFRODITE

Design C. Ballabio

SCRITTOIO | WRITING DESK

2015

Scrivania con struttura in massello di noce canaletta ed elemento laterale con tre cassetti. Piano realizzato in legno, in cuoietto, in marmo, oppure in cristallo.

Possibilità di aggiungere un elemento a specchio nella versione con piano in legno e in cuoietto.

Writing desk with frame in solid canaletta walnut and side element with three drawers. Top in wood, cuoietto, marble or glass.

Mirror available for wooden or cuoietto top only.

Schreibtisch mit Gestell aus massivem Nussbaum Canaletta mit seitlichem Element und drei Schubladen. Platte aus Holz, Cuoietto, Marmor oder Glas.

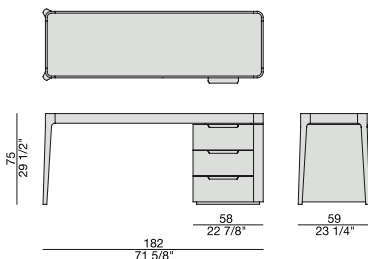
Mit der Möglichkeit, in der Ausführung mit Holz- und Cuoiettoplatte, einen Spiegelement hinzufügen.

Bureau avec structure en noyer canaletta massif et élément latéral avec trois tiroirs. Plateau en bois, cuoietto, marbre ou verre.

Possibilité d'ajouter un élément à miroir dans la version avec plateau en bois et en cuoietto.

Escritorio con estructura en nogal canaletta macizo y elemento lateral con tres cajones. Tapa realizada en madera, en cuoietto, en mármol o en cristal.

Posibilidad de añadir un elemento en espejo en la versión con tapa en madera y en cuoietto.



## Essenze | Wood



NOCE CANALETTA  
Canaletta Walnut

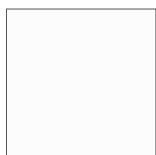


NOCE CANALETTA  
Canaletta Walnut  
*tinto/stained moka*



NOCE CANALETTA  
Canaletta Walnut  
*tinto/stained wengé*

## Laccato opaco poro chiuso | Matt Lacquered closed pore



BIANCO  
White  
(RAL 9016)



AVORIO  
Ivory  
(RAL 1013)



ARGILLA  
Argilla  
(RAL 7006)



PIOMBO  
Piombo  
(NCS S5005G20Y)



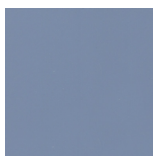
NERO  
Black  
(RAL 9005)



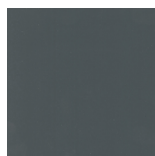
GRANATA  
Granata  
(NCS S4050Y90R)



PISTACCHIO  
Pistacchio  
(PANTONE 5825)



AVIO  
Avio  
(PANTONE 5415)

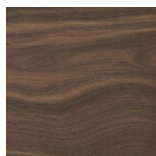


IRON  
Iron  
(RAL 7011)

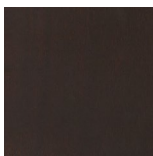


CIOCCOLATO  
Chocolate  
(RAL 8019)

## Essenze | Wood



NOCE CANALETTA  
Canaletta Walnut

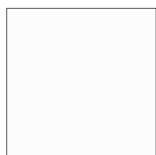


NOCE CANALETTA  
Canaletta Walnut  
tinto/stained moka



NOCE CANALETTA  
Canaletta Walnut  
tinto/stained wengé

## Laccato opaco poro chiuso | Matt Lacquered closed pore



BIANCO  
White  
(RAL 9016)



AVORIO  
Ivory  
(RAL 1013)



ARGILLA  
Argilla  
(RAL 7006)



PIOMBO  
Piombo  
(NCS S5005G20Y)



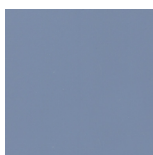
NERO  
Black  
(RAL 9005)



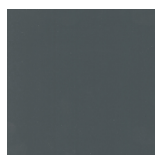
GRANATA  
Granata  
(NCS S4050Y90R)



PISTACCHIO  
Pistacchio  
(PANTONE 5825)



AVIO  
Avio  
(PANTONE 5415)

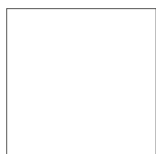


IRON  
Iron  
(RAL 7011)



CIOCCOLATO  
Chocolate  
(RAL 8019)

## Cuoietto | Cuoietto Leather



BIANCO  
White



NERO  
Black



FOCA  
Foca



GRIGIO SCURO  
Dark Grey



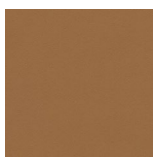
CORDA  
Corda



SABBIA  
Sabbia



NATURALE  
Natural



INVECCHIATO  
Invecchiato

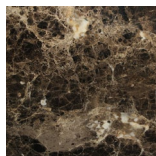


TESTA DI MORO  
Testa di Moro

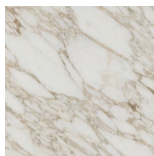


BULGARO  
Bulgaro Red

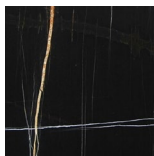
## Marmo | Marble



Emperador Dark



Calacatta Oro

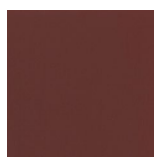


Sahara Noir

## Cristallo Laccato | Lacquered glass



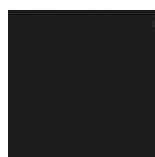
BLANCO  
White



GRANATA  
Garnet red



IRON  
Iron Grey

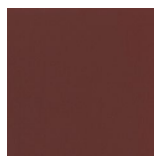


NERO  
Black

## Cristallo Extrachiario Acidato Retroverniciato | Extralight Frosted Backcoated glass



BLANCO  
White

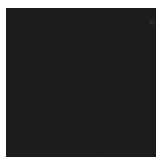


GRANATA  
Garnet red



IRON  
Iron Grey

## Cristallo Acidato Retroverniciato | Frosted Backcoated glass



NERO  
Black

# AFRODITE

Design C. Ballabio

SCRITTOIO | WRITING DESK

2015

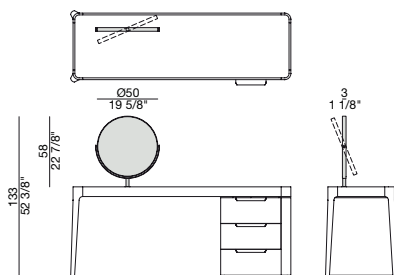
Specchio orientabile per scrittoio Afrodite con struttura in ottone bronzato spazzolato.

Swiveling mirror for Afrodite writing desk with frame in brushed bronzed brass.

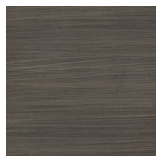
Ermöglicht Spiegel für Schreibtisch Afrodite mit Gestell aus bronzierten gebürsteten Messing.

Miroir orientable pour bureau Afrodite avec structure en cuivre bronzé brossé.

Espejo orientable para escritorio Afrodite con estructura en latón bronceado cepillado.



**Metallo** | *Metal*



OTTONE BRONZATO  
SPAZZOLATO  
Brushed bronzed brass

**Specchio** | *Mirror*



NATURALE  
*Clear*