

ASTRA

Design D. Dolcini

LAMPADA A SOSPENSIONE | SUSPENSION LAMP

2020



Lampada a sospensione con struttura in massello di noce canaletta e diffusori in vetro opalino lucido. Cavo in gomma silconica finitura nero opaco. Altezza dei cavi regolabile direttamente durante l'installazione. Rosone e anello distanziale in metallo verniciato nero opaco.

Lampadine: 2 x 6 W - attacco G9 - 3000 K - 220/240 V

Suspension lamp with frame in solid canaletta walnut and diffusers in shiny white opal glass. Matt black silicone rubber cable. The height of the cables can be adjusted on site during the installation. Ceiling rose and spacer ring in matt black metal.

Bulbs: 2 x 6 W - G9 fitting - 3000 K - 220/240 V

Hängeleuchte mit einem Rahmen aus massivem Nussbaum canaletta und Diffusoren aus glänzendem weißen Opalglas. Das Silikonkabel hat die Ausf. Matt schwarz. Die Höhe der Leuchte kann während der Montage vor Ort eingestellt werden. Distanzring und Deckenrose aus Metall mattschwarz lackiert.

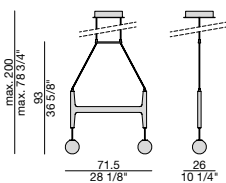
Leuchtmittel: 2 x 6W. - G9. Anschluss: 3000K - 220/240 V.

Lampe à suspension avec structure en noyer canaletta massif et diffuseurs en verre opalin brillant. Câble en caoutchouc de silicone en finition noir mat. Possibilité de régler la hauteur des câbles sur site, pendant l'installation. Rosace de plafond et bagues entretoises en métal noir mat.

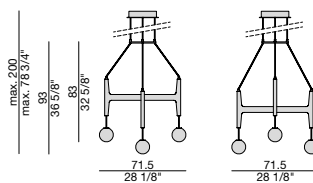
Ampoule: 2 x 6 W - attaque G9 - 3000 K - 220/240 V

Lámpara de suspensión con estructura en nogal canaletta macizo y difusor en cristal ópalo brillo. Cables en silicona negro mate. Cables regulable durante la instalación. Roseta y anillo distanciador en metal acabado negro mate.

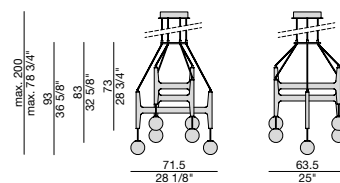
Bombillas: 2 x 6 W - ataque G9 - 3000 K - 220/240 V



ASTRA 1



ASTRA 2



ASTRA 3

ASTRA

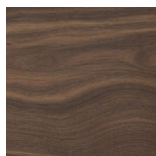
LAMPADA A SOSPENSIONE | SUSPENSION LAMP

Design D. Dolcini

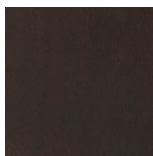
2020



Essenze | Wood



NOCE CANALETTA
Canaletta Walnut

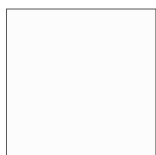


NOCE CANALETTA
Canaletta Walnut
tinto/stained moka

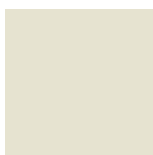


NOCE CANALETTA
Canaletta Walnut
tinto/stained wengé

Laccato opaco poro chiuso | Matt Lacquered closed pore



BIANCO
White
(RAL 9016)



AVORIO
Ivory
(RAL 1013)



ARGILLA
Argilla
(RAL 7006)



PIOMBO
Piombo
(NCS S5005G20Y)



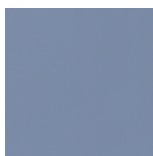
NERO
Black
(RAL 9005)



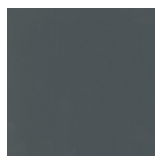
GRANATA
Granata
(NCS S4050Y90R)



PISTACCHIO
Pistacchio
(PANTONE 5825)



AVIO
Avio
(PANTONE 5415)

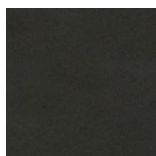


IRON
Iron
(RAL 7011)



CIOCCOLATO
Chocolate
(RAL 8019)

Metallo | Metal



NERO OPACO
Matt black