

PRESENTING THE WARDROBE PROGRAMME

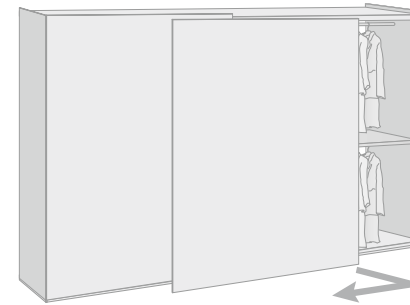
SWING DOOR WARDROBE



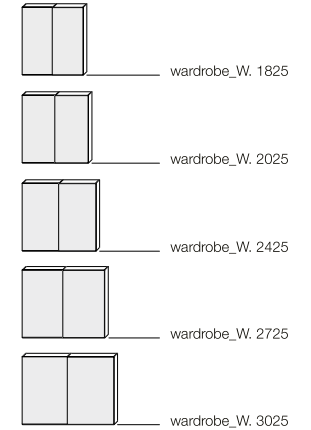
HEIGHTS:	MODULES:
- 2256	- 425
- 2384	- 475
- 2544	- 575
- 2896	- 875
	- 975
	- 1175
	- Corner
	- End

PRESENTING THE WARDROBE PROGRAMME

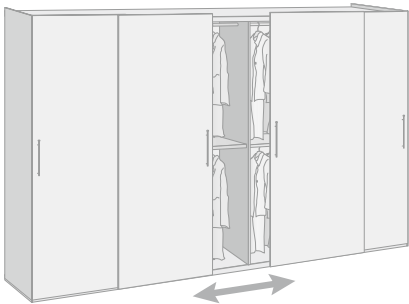
COPLANAR SLIDING DOOR WARDROBE



HEIGHTS:	MODULES:
- 2256	- 875 _1 door W. 909
- 2384	- 975 _1 door W. 1009
- 2544	- 1175 _1 door W. 1209
	- 1325 _1 door W. 1399
	- 1475 _1 door W. 1509

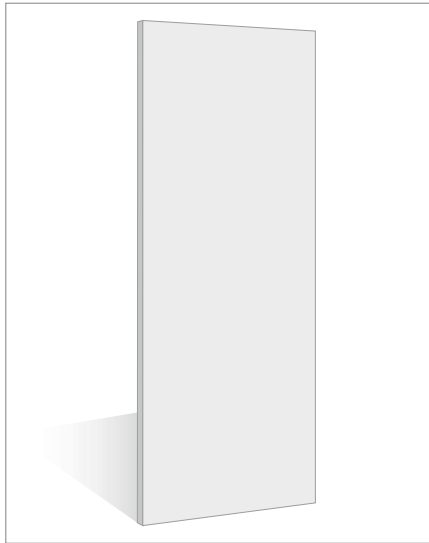
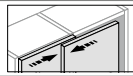


SLIDING DOOR WARDROBE



HEIGHTS:	MODULES:
- 2256	- 725 _1 door W. 770
- 2384	- 875 _1 door W. 920
- 2544	- 975 _1 door W. 1020
	- 1175 _1 door W. 1220
	- 1325 _1 door W. 1370
	- 1475 _1 door W. 1520
	- Corner

LISCIA_SLIDING DOOR

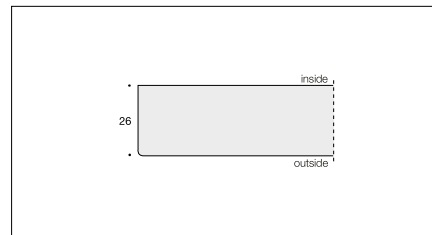


TECHNICAL FEATURES

The Liscia sliding door is composed of:
 – a 26 mm thick honeycomb-core panel in the matt lacquered, gloss lacquered finishes.

* = THE W. 770 SLIDING DOOR CANNOT BE FITTED WITH THE SOFT-CLOSE MECHANISM

CROSS-SECTION



FRONTS

basic matt lacquer



matt palette lacquer



basic gloss lacquer



gloss palette lacquer



HANDLES (see page 49 - 50)

	SLIDING
Avant	–
Chiave Passpartout	–
Filo New L. 1120	•
Gea L. 140 orizzontale	–
Kono Ø 50	–
Lipsi	•
Concealed handle	••
Movida corta L. 260	•
Movida lunga L. 772	•
Push-to-open	–
Petra	–
Sagitta	–
Sky	–
Tecna corta L. 260	–
Tecna lunga L. 772	–

DOOR DIMENSIONS

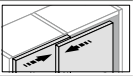
DOOR TYPES	H. 2256	H. 2384	H. 2544	H. 2896
★ W. 770	•	•	•	–
W. 920	•	•	•	–
Sliding				
W.1020	•	•	•	–
W.1220	–	–	–	–
W.1370	–	–	–	–
W.1520	–	–	–	–

- = AVAILABLE
- = FITTED ON THE EDGE

– = NOT AVAILABLE

CUSTOM-SIZED REDUCTIONS IN HEIGHT ONLY ON PAGE 277

LISCIA COLOR WOOD_WOOD_SLIDING DOOR

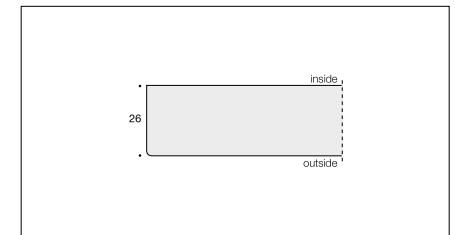


TECHNICAL FEATURES

The Color Wood and wooden Liscia sliding door is composed of:
 – a 26 mm thick honeycomb-core panel.

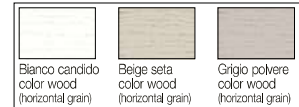
* = THE W. 770 SLIDING DOOR CANNOT BE FITTED WITH THE SOFT-CLOSE MECHANISM

CROSS-SECTION



FRONTS

basic color wood



color wood palette finishes



HANDLES (see page 49 - 50)

	SLIDING
Avant	–
Chiave Passpartout	–
Filo New L. 1120	•
Gea L. 140 orizzontale	–
Kono Ø 50	–
Lipsi	•
Concealed handle	••
Movida corta L. 260	•
Movida lunga L. 772	•
Push-to-open	–
Petra	–
Sagitta	–
Sky	–
Tecna corta L. 260	–
Tecna lunga L. 772	–

DOOR DIMENSIONS

DOOR TYPES	H. 2256	H. 2384	H. 2544	H. 2896
★ W. 770	•	•	•	–
W. 920	•	•	•	–
Sliding				
W.1020	•	•	•	–
W.1220	–	–	–	–
W.1370	–	–	–	–
W.1520	–	–	–	–

- = AVAILABLE
- = FITTED ON THE EDGE

– = NOT AVAILABLE

CUSTOM-SIZED REDUCTIONS IN HEIGHT ONLY ON PAGE 277