

PRESENTING THE WARDROBE PROGRAMME

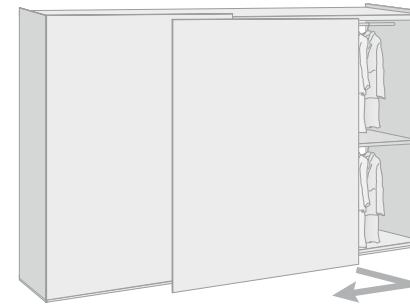
SWING DOOR WARDROBE



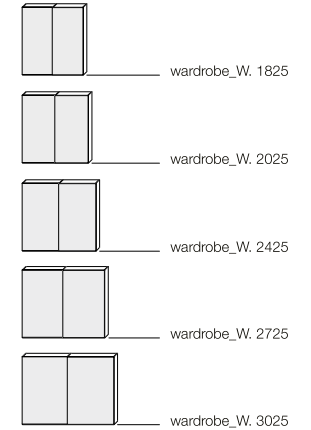
HEIGHTS:	MODULES:
- 2256	- 425
- 2384	- 475
- 2544	- 575
- 2896	- 875
	- 975
	- 1175
	- Corner
	- End

PRESENTING THE WARDROBE PROGRAMME

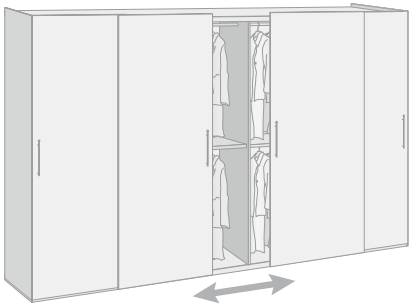
COPLANAR SLIDING DOOR WARDROBE



HEIGHTS:	MODULES:
- 2256	- 875 _1 door W. 909
- 2384	- 975 _1 door W. 1009
- 2544	- 1175 _1 door W. 1209
	- 1325 _1 door W. 1399
	- 1475 _1 door W. 1509

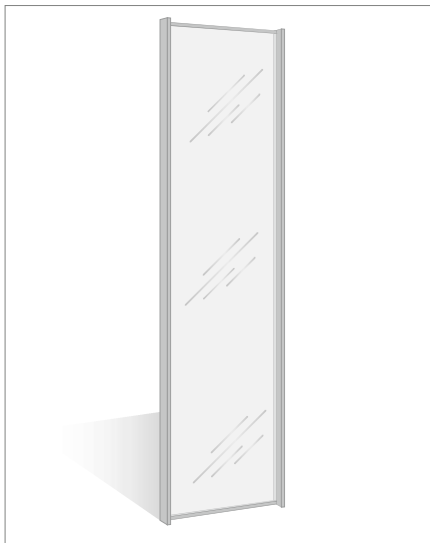
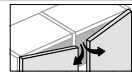


SLIDING DOOR WARDROBE



HEIGHTS:	MODULES:
- 2256	- 725 _1 door W. 770
- 2384	- 875 _1 door W. 920
- 2544	- 975 _1 door W. 1020
	- 1175 _1 door W. 1220
	- 1325 _1 door W. 1370
	- 1475 _1 door W. 1520
	- Corner

35 mm thick FRAMED_SWING GLASS DOOR

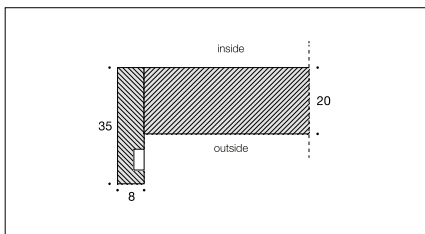


TECHNICAL FEATURES

Grigio Londra finish aluminium frame with integrated, soft-close hinges.
 For safety reasons, the glass is always supplied tempered: in the event of breakage this type of glass shatters into blunt pieces.
 The effect of the Grigio Londra finish on metal varies depending on the light.

**N.B.: NOT AVAILABLE FOR CORNER OR END MODULES
 NOT AVAILABLE WITH A LOCK**

CROSS-SECTION



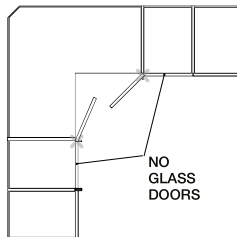
FRONTS



FRAME



NOT AVAILABLE FOR THE MODULE ADJACENT TO THE CORNER

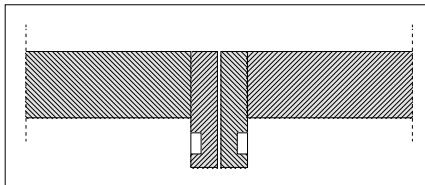


If framed clear glass doors are chosen, it is advisable to use the lighting system designed to be connected to the switch in the room (to be performed by the customer), alternatively an optional remote control is available.

DOOR DIMENSIONS

DOOR TYPES	H. 2256	H. 2384	H. 2544	H. 2896
Swing	W. 450	•	•	•
	W. 500	•	•	•
	W. 600	—	—	—

HANDLE INCORPORATED IN THE FRAME



If doors are fitted in pairs, there will be a handle on each door.

- = AVAILABLE
 - = NOT AVAILABLE
- CUSTOM-SIZING IS NOT POSSIBLE**