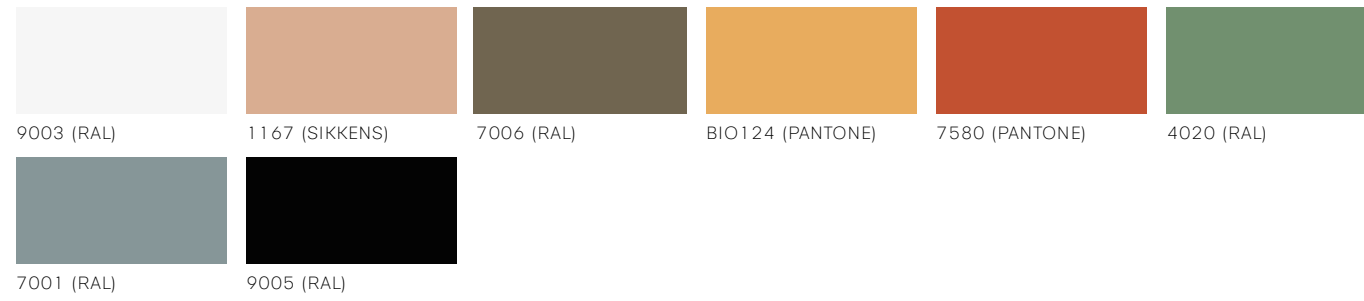
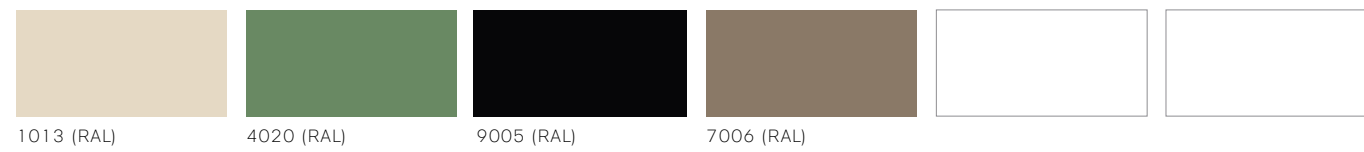


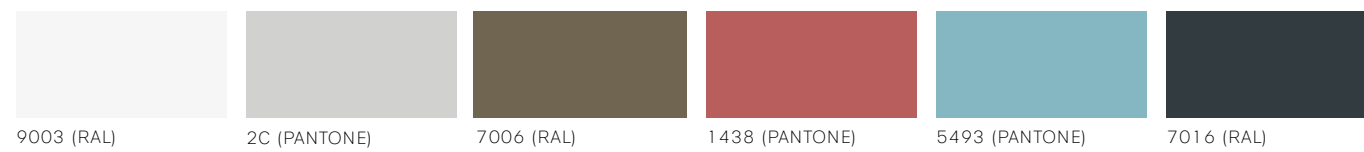
PLASTICA DEEP



PLASTICA DEEP XL



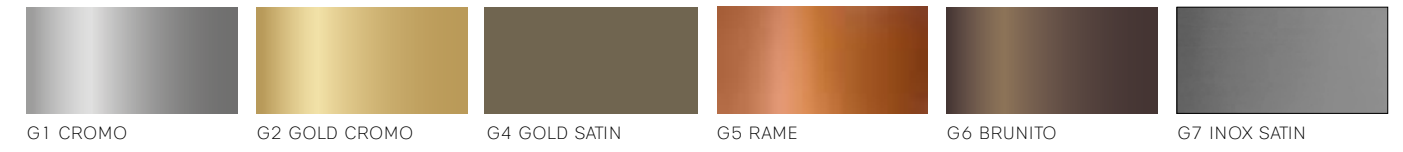
PLASTICA KELLY



MELAMINICO



GALVANICHE METALLI



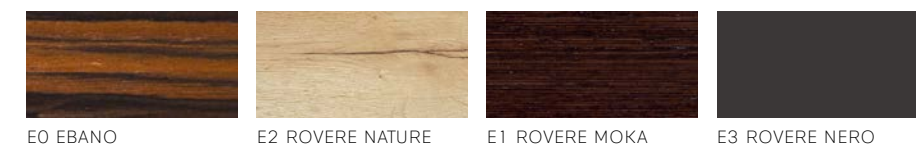
MAT VERNICIATURE



METALLICHE VERNICIATURE



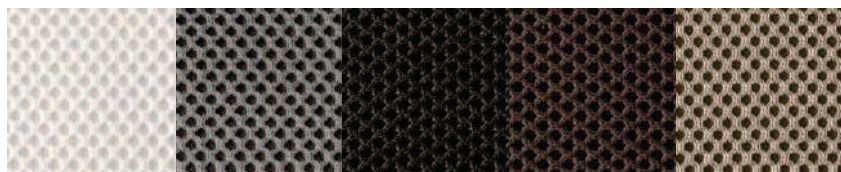
ESSENZA



MARMO



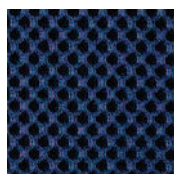
Rete / Mesh Gabriel



20 21 22 23 30



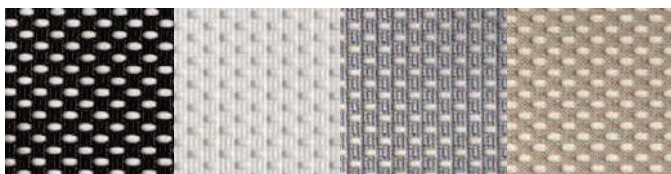
26 28 24 25 27



29

Peso / Weight. 510 gr. gr/mtl
 Composizione / Composition. 100% Poliestere / Polyester
 Resistenza all'abrasione / Abrasion. (Martindale) 70.000 cicli / rubs
 Omologazione / Flammability. BS EN 1021-1:2014
 Uso / Use. Ufficio / Office, Collettività / Waiting rooms, Scuola / School
 Pulizia / Cleaning. Usare con regolarità l'aspirapolvere a beccuccio liscio, senza spazzolare (lavaggio a secco)
 Use a vacuum cleaner regularly to plain tip, do not brush (dry cleaning)

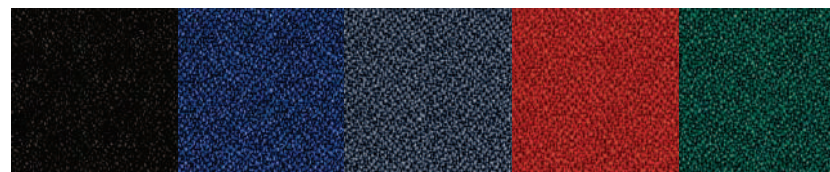
Rete / Mesh Goal



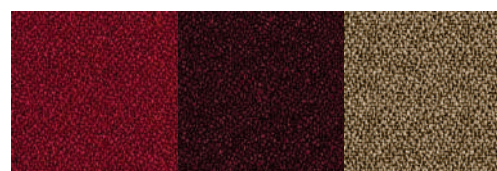
171 172 174 177

Peso / Weight. 350
 Composizione / Composition. 100% Poliestere / Polyester
 Resistenza all'abrasione / Abrasion. (Martindale) 100.000 cicli / rubs
 Omologazione / Flammability. CL. 1
 Uso / Use. Ufficio / Office, Collettività / Waiting rooms, Scuola / School
 Pulizia / Cleaning. Usare con regolarità l'aspirapolvere a beccuccio liscio, senza spazzolare (lavaggio a secco)
 Lavabile a mano 30° / Use a vacuum cleaner regularly to plain tip, do not brush (dry cleaning). Hand washable at 30°

Crepè | cl. 1



201 202 203 204 205



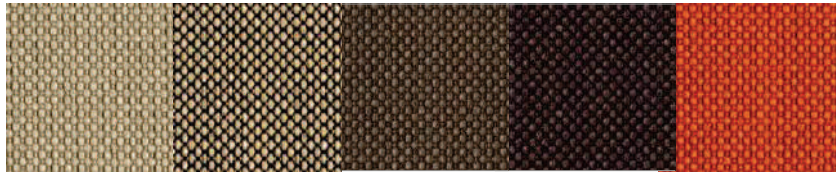
206 207 208

Tessuto ignifugo in cl. 1°, altamente performante, trama compatta tipo crepe, estetica attuale
 Class 1 fire retardant fabric, compact texture crepe type, modern aesthetics

Peso / Weight. 350 gr/mtl - Composizione / Composition. 100% Poliestere / Polyester
 Omologazione / Flammability. Classe 1, EN 1021-1 EN 1021-2
 Abrasione / Abrasion. Test Martindale UNI EN ISO 12945/1. 50.000+/- 10% cicli / rubs
 Uso / Use. Ufficio / Office, Collettività / Waiting rooms, Scuola / School
 Pulizia / Cleaning. Usare con regolarità l'aspirapolvere / Use a vacuum cleaner regularly

Leggere differenze di colore tra differenti partite sono da considerarsi normali
 Slight color differences between one lot and another have to be considered within commercial tolerance.

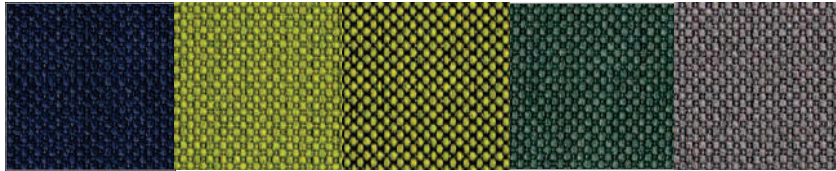
Laser | cl. 1



441 442 457 458 443



444 445 446 447 448



455 449 450 456 451



452 453 454

Peso / Weight. 500 gr/mtl - Composizione / Composition. 100% Poliestere FR
 Omologazione / Flammability. Classe C1, B1, M1, CRIB 5, BS7176 Medium Hazard, NF D 60013 Class AM18
 Abrasione / Abrasion. Test Maltindale UNI EN ISO 12947/2 80.000 +/- 10% cicli/rubs
 Pilling / Pilling. UNI EN ISO 105X12
 Tolleranza / Tolerance. 4/5
 Pulizia / Cleaning. Lavabile 60° mano o a secco / Hand washable at 60° or dry wash
 Certificato / Certificate. OEKO TEX

Leggere differenze di colore tra differenti partite sono da considerarsi normali
 Slight color differences between one lot and another have to be considered within commercial tolerance.

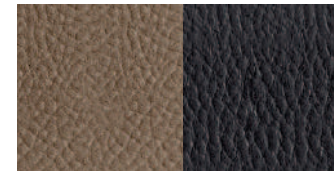
Ecopelle / Leatherette | cl. 1



31 Blu 32 Verde 33 Nero 34 Avorio 35 Rosso



36 Giallo 37 Cuoio 38 Bianco 39 Bordeaux 41 Testa di moro



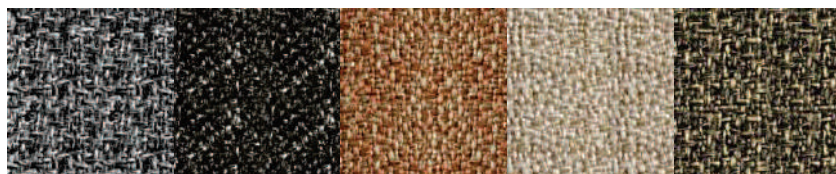
42 Tortora 43 Antracite

Pelle sintetica, gamma completa di colori, bella e resistente coniuga in modo impeccabile estetica e praticità
 Leatherette, full range of colours, nice and resistant, combines impeccably aesthetics and practicality

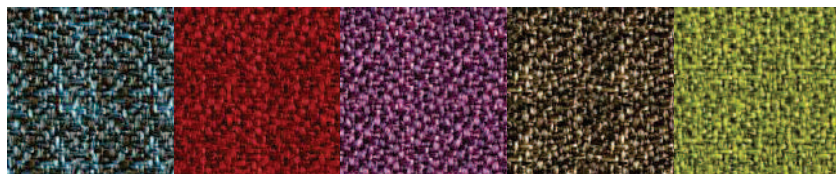
Peso / Weight. 630 gr/mt2 - Composizione / Composition. 83% PVC, 17% Sintetico / Synthetic
 Omologazione / Flammability. ISO 3797- DIN 75200 - CSE RF 4/83
 Abrasione / Abrasion. Test Maltindale Bs 5690/79 - 30.000 cicli / rubs
 Uso / Use. Ufficio / Office, Collettività / Waiting rooms, Scuola / School
 Pulizia / Cleaning. Usare con regolarità l'aspirapolvere / Use a vacuum cleaner regularly

Leggere differenze di colore tra differenti partite sono da considerarsi normali
 Slight color differences between one lot and another have to be considered within commercial tolerance.

Bio-Expo | cl. 1



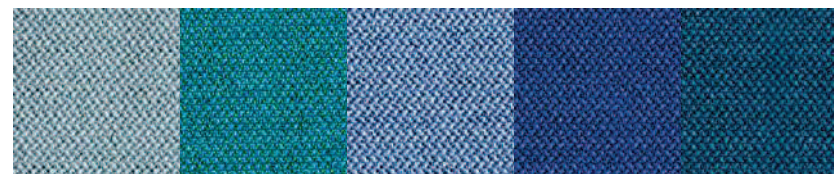
B1 B2 B3 B4 B5



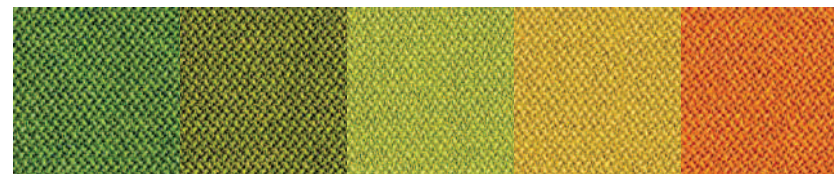
B6 B7 B8 B9 B10

Peso / Weight. 300 gr/mt₂
 Composizione / Composition. 100% Propitex FR batteriostatico
 Omologazione / Flammability. UNI EN ISO 354:2003 1IM
 Abrasione / Abrasion. Martindale 100.000 cicli/rubs
 Uso / Use. Ufficio / Office, Collettività / Waiting rooms, Scuola / School.
 Certificato / Certificate. OEKO TEX
 Pulizia / Cleaning. Usare con regolarità l'aspirapolvere a beccuccio liscio, senza spazzolare (lavaggio a secco). Lavabile a mano a 30°
 Use a vacuum cleaner regularly to plain tip, do not brush (dry cleaning). Hand washable at 30°

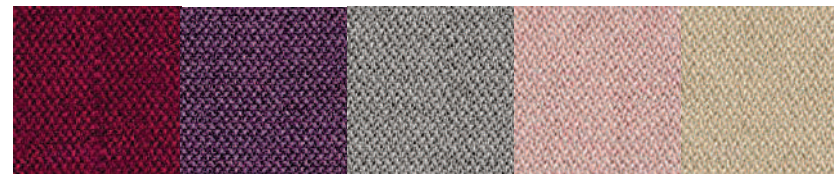
Era by **camira** | cl. 1



61 62 63 64 65



66 67 68 69 70



71 72 73 74 75



76 77 79

Peso / Weight. 448 gr/mtl
 Composizione / Composition. 100% Poliestere/Polyester
 Omologazione / Flammability. EN 1021/1 - EN 1021/2
 Abrasione / Abrasion. (Martindale) 100.000 Martindale (Garanzia 10 anni)
 Uso / Use. Ufficio / Office, Collettività / Waiting rooms, Scuola / School.
 Certificato / Certificate. OEKO TEX
 Pulizia / Cleaning. Usare con regolarità l'aspirapolvere a beccuccio liscio, senza spazzolare (lavaggio a secco)
 Use a vacuum cleaner regularly to plain tip, do not brush (dry cleaning)

Sistema Pro | cl. 1



81 84 85 86 87.1



90 92.1 94 95 96



99 100

Estremamente morbida e performante, la pelle sintetica Sistema coniuga praticità ed estetica in modo eccellente
Extremely soft, similar leather Sistema combines practicality and aesthetics in an excellent way

Peso / Weight. 710 gr/mtl - Composizione / Composition. Retro/back 28% PL – superficie/ surface 93% PVC
Omologazione / Flammability. INI1975 classe 1EMME, UNI 9175/FA - BS EN 1021 P.1/2 1994BS 5852
Abrasione / Abrasion. Test Maltindale Uni EN ISO 5690/79 ISO 12947 - 2;00 - 100.000 cicli / rubs
Uso / Use. Ufficio / Office, Collettività / Waiting rooms, Scuola / School
Pulizia / Cleaning. Rimuovere immediatamente lo sporco con panno bianco, acqua o sapone neutro
Remove immediately dirt with white cloth, water or mild soap

Leggere differenze di colore tra differenti partite sono da considerarsi normali
Slight color differences between one lot and another have to be considered within commercial tolerance.

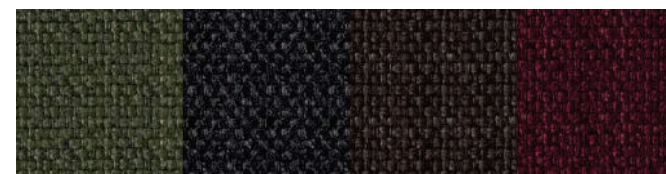
Laser Plus | cl. 1



620 621 622 623 624



625 626 627 628 629



630 631 632 633

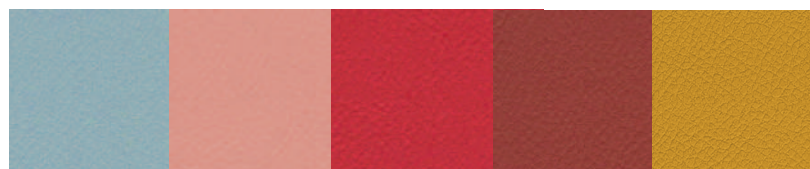
Peso / Weight. 630 gr/mtl
Composizione / Composition. 100% Poliestere FR Trevira/ Polyester FR Trevira
Resistenza al fuoco / Burning behaviour. Classe 1
Resistenza all'abrasione / Abrasion. 100.000 cicli / turns \pm 20% UNI EN ISO 12947:2000
Uso / Use. Ufficio / Office, Collettività / Waiting rooms, Scuola / School
Pulizia / Cleaning. Usare con regolarità l'aspirapolvere. Lavabile a mano 60° / Use a vacuum cleaner regularly. Hand washable at 60°

Leggere differenze di colore tra differenti partite sono da considerarsi normali
Slight color differences between one lot and another have to be considered within commercial tolerance.

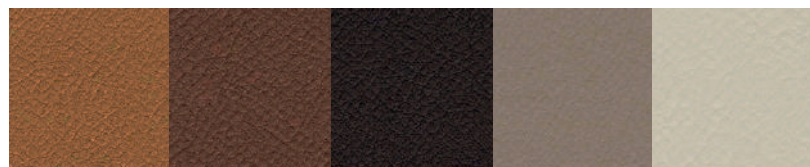
Vitax by **camira** | cl. 1



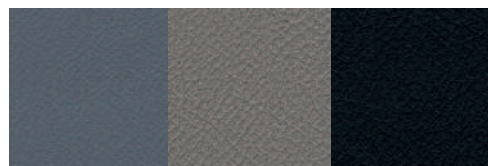
V06 V29 V30 V56 V21



V36 V51 V52 V11 V03



V46 V39 V13 V02 V38

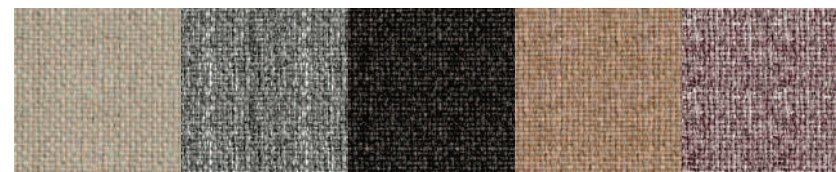


V04 V01 V12

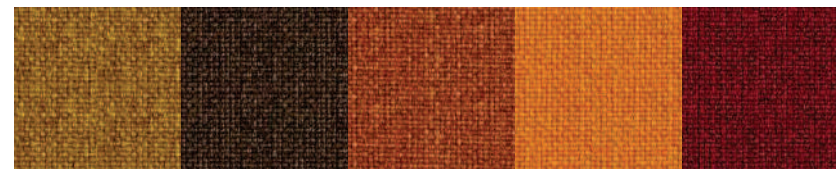
Composizione. Superficie: 98% PVC, 2%. PU Sustrato: 100% Cotone
 Composition. Surface: 98% PVC, 2%. PU Substrate: 100% Cotton
 Peso/Weight. 850 m2
 Omologazione/Flammability. EN 1021 - 1&2 Cigarette & Match - BS 7176 Low Hazard - BS 5852 Ignition Souce 5 - BS 7176 Medium Hazard
 Abrasione/Abrasion. - Test Maltindale UNI EN ISO 5470-2 100,000 cicli.
 Solidità alla luce/Light fastness. Uni EN ISO 105-B2 - 6
 Solidità allo sfregamento/ Fastness to rubbing. 100.000 cicli/rubs
 Uso / Use. Ufficio / Office, Collettività / Waiting rooms, Scuola / School
 Pulizia / Cleaning. Usare con regolarità l'aspirapolvere / Use a vacuum cleaner regularly

Leggere differenze di colore tra differenti partite sono da considerarsi normali
 Slight color differences between one lot and another have to be considered within commercial tollerance.

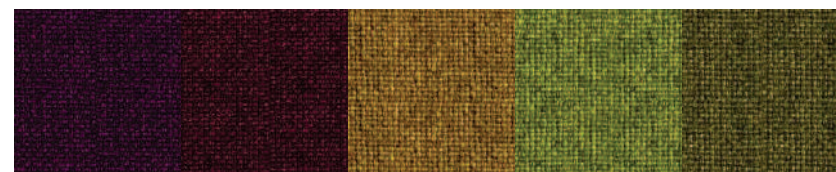
Melangè | cl. 1



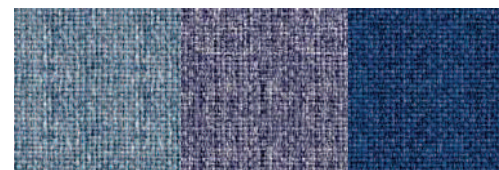
401 Cemento 402 Grigio 403 Ferro 404 Beige 405 Seta



406 Senape 407 Cacao 408 Ruggine 409 Mandarino 410 Melograno



411 Violet 412 Vino 413 Miele 414 Green 415 Foglia

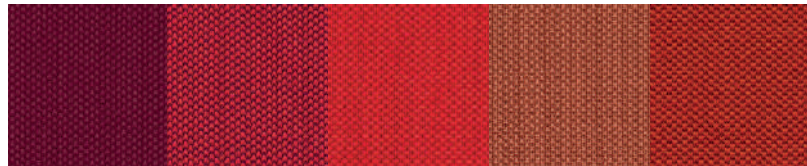


416 Oxford 417 Jeans 418 Blu

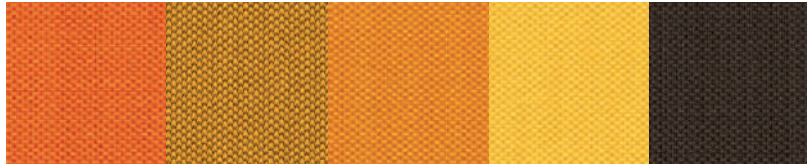
Composizione. 100% Trevira CS, trama sottile e raffinata con effetto melange, tessuto destinato a tutti i tipi di prodotto e ambiente. Le proprietà ignifughe sono intrinseche nella fibra.
 Composition. 100% Trevira CS, thin and refined texture with a melange effect, this fabric can be used for any chair and in any area. The fabric is also fire retardant.
 Peso/Weight. 390 g/ml- composizione/composition 100% Trevira CS
 Omologazione/Flammability. Classe1, B1, M1, CRIB5, EN1021/1-2, IMO A 652 [16] BS7176, NF D 60013 Class AM18
 Abrasione/Abrasion. - Test Maltindale UNI EN ISO 12947/2 80.000+/- 10% cicli.
 Pilling/Pilling. UNI EN ISO 12945/2 - 5
 Solidità alla luce/Light fastness. Uni EN ISO 105-B2
 Solidità allo sfregamento/ Fastness to rubbing. UNI EN ISO 105-x12
 Uso / Use. Ufficio / Office, Collettività / Waiting rooms, Scuola / School
 Pulizia / Cleaning. Usare con regolarità l'aspirapolvere / Use a vacuum cleaner regularly

Leggere differenze di colore tra differenti partite sono da considerarsi normali
 Slight color differences between one lot and another have to be considered within commercial tollerance.

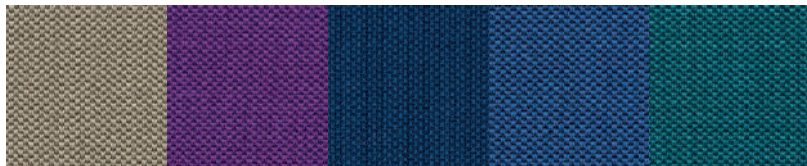
One Recycled | cl. 1 



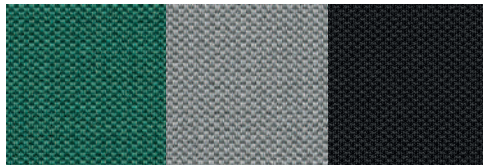
001 002 003 007 008



010 011 012 013 014



016 019 021 023 027

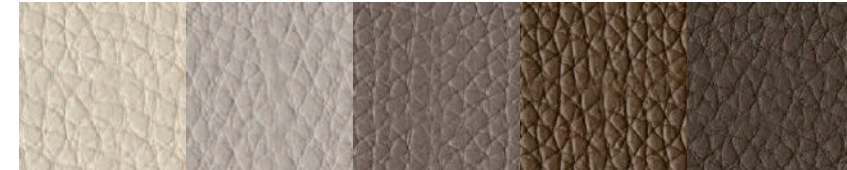


030 038 040

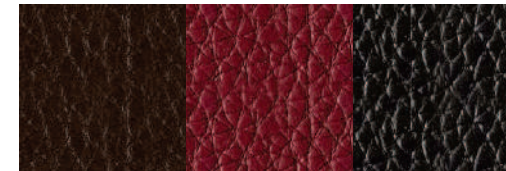
Composizione. Tessuto a maglia 100% poliestere riciclato da bottiglie.
 Composition. Knitted fabric, 100% Recycled Polyester from bottles
 Peso/Weight. 525 g/mtl - Composizione/composition 100% Poliestere Riciclato / 100% Recycled polyester
 Omologazione/Flammability. UNI 9175 Class 1 IM - EN 1021-1 & 2 - CRIB 5 - BS 7176 Class Medium Hazard - California TB 117-2013
 Abrasione/Abrasion. - ISO 12947-2 (Martindale) 100.000 ± 10 %
 Pilling/Pilling. UNI EN ISO 12945/2 - 5
 Solidità alla luce/Light fastness. Uni EN ISO 105-B2 - 6
 Solidità allo sfregamento/ Fastness to rubbing. UNI EN ISO 105-X12 - 4/5
 Uso / Use. Ufficio / Office, Collettività / Waiting rooms, Scuola / School
 Pulizia / Cleaning. Usare con regolarità l'aspirapolvere / Use a vacuum cleaner regularly

Leggere differenze di colore tra differenti partite sono da considerarsi normali
 Slight color differences between one lot and another have to be considered within commercial tolerance.

Ecopelle Soul | cl. 1



640 641 642 643 644



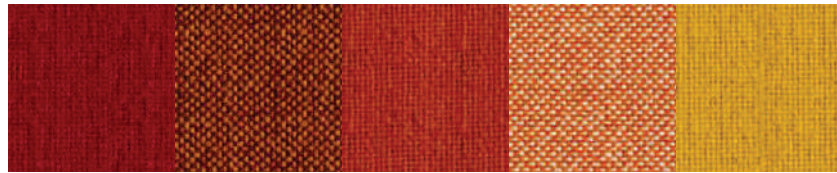
645 646 648

Ecopelle con superficie in poliuretano / Faux leather with polyurethane surface

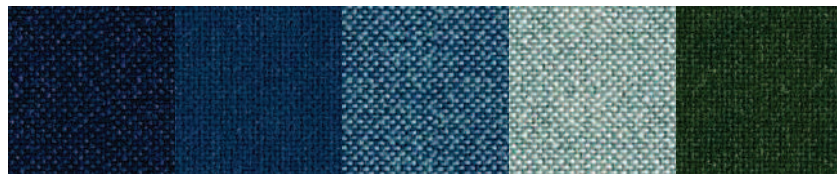
Peso / Weight. 760 gr/mtl
 Composizione / Composition. Superficie / Surface: Poliuretano / Poliurethane 100%.
 Base / Base: Poliestere / Polyester 85%, Cotone / Cotton 15%
 Resistenza al fuoco / Burning behaviour. EN1021-1 e BS 5852 PART 1
 Resistenza all'abrasione / Abrasion. > 100.000 EN ISO 5470-2
 Uso / Use. Ufficio / Office, Collettività / Waiting rooms, Scuola / School
 Pulizia / Cleaning. Usare con regolarità l'aspirapolvere / Use a vacuum cleaner regularly

Leggere differenze di colore tra differenti partite sono da considerarsi normali
 Slight color differences between one lot and another have to be considered within commercial tolerance.

Jet | cl. 1



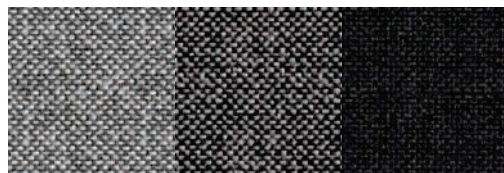
461 Rosso 462 Astice 463 Gingi 464 Lentiggini 465 Giallo



466 Bluette 467 Elba 468 Cielo 469 Nuvola 470 Oliva



471 Green 472 Taste 473 Ombra 474 Grigio 475 Fango



476 London 477 Pepe 478 Black

Peso / Weight. 365 gr/mtl ± 5%
 Composizione / Composition. 100% Poliestere - Trevira CS
 Omologazione / Flammability. CL1
 Abrasione / Abrasion. (Martindale) UNI EN ISO 12947/2, 65.000 cicli / rubs ± 10%
 Uso / Use. Ufficio / Office, Collettività / Waiting rooms, Scuola / School.
 Certificato / Certificate. Ecolabel
 Pulizia / Cleaning. Usare con regolarità l'aspirapolvere a beccuccio liscio, senza spazzolare (lavaggio a secco)
 Use a vacuum cleaner regularly to plain tip, do not brush (dry cleaning)

Velours | cl. 1



701 702 706 707 708



709 710 711 713 715



718 719 720 721

Peso / Weight. 611 gr/mtl
 Composizione / Composition. Superficie / Surface 100% Poliestere / Polyester. Base / Base 100% Poliestere / Polyester
 Resistenza all'abrasione / Abrasion. (Martindale) UNI EN ISO 12947-1,2 >50.000 cicli / cycles
 Pilling test. EN ISO 12945-2 4-5
 Solidità alla luce / Fastness to light. EN ISO 105-B02-2 Colori luminosi / Bright colours 5. Colori scuri / Dark colours 4-5
 Idrorepellente / Water repellent
 Uso / Use. Ufficio / Office, Collettività / Waiting rooms, Scuola / School
 Pulizia / Cleaning. Lavabile a mano a 30° / Hand washable at 30 °

Cocon | cl. 1



R10

R40

R30

R80

R70



R20

Peso / Weight. 980 gr/mtl

Composizione / Composition. 43% Viscosa / Viscose 33% Cotone / Cotton 15% Lino / Linen 9% Poliestere / Polyester

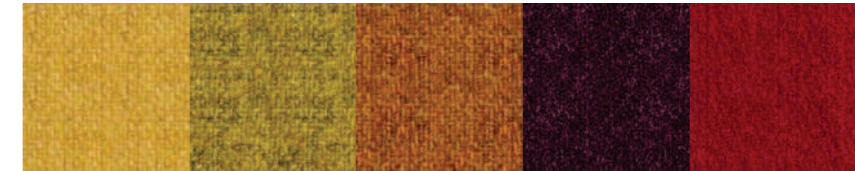
Resistenza all'abrasione / Abrasion. (Martindale) UNI EN ISO 12945-2 EN ISO 12947-2

Uso / Use. Ufficio / Office, Collettività / Waiting rooms, Scuola / School

Pulizia / Cleaning. Usare con regolarità l'aspirapolvere a beccuccio liscio, senza spazzolare (lavaggio a secco)

Use a vacuum cleaner regularly to plain tip, do not brush (dry cleaning)

Lana / Wool | cl. 1



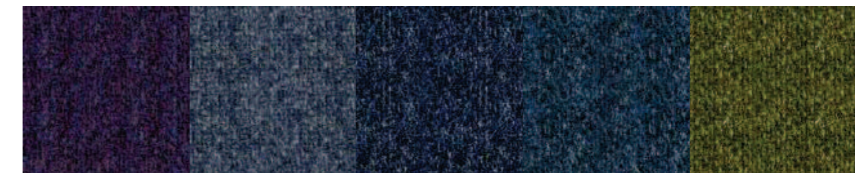
544

545

546

549

550



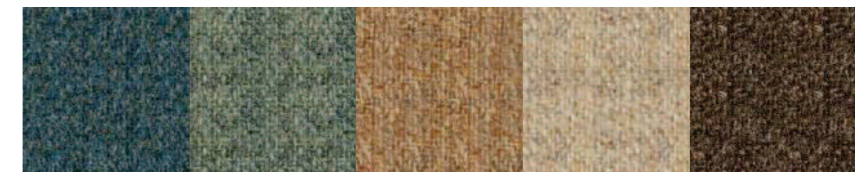
556

557

558

559

560



563

564

565

566

567



568

569

570

Peso / Weight. 500 gr/mtl

Composizione / Composition. 75% lana/wool - 25% Poliammide/ Polyamide

Omologazione / Flammability. CLASSE 1 IM

Abrasion / Abrasion. (Martindale) UNI EN ISO 12947:2000 100.000

Uso / Use. Ufficio / Office, Collettività / Waiting rooms, Scuola / School.

Pulizia / Cleaning. Usare con regolarità l'aspirapolvere a beccuccio liscio, senza spazzolare (lavaggio a secco)

Use a vacuum cleaner regularly to plain tip, do not brush (dry cleaning)

Pelle / Leather



101 102 103 104 105



106 107 108 109 111



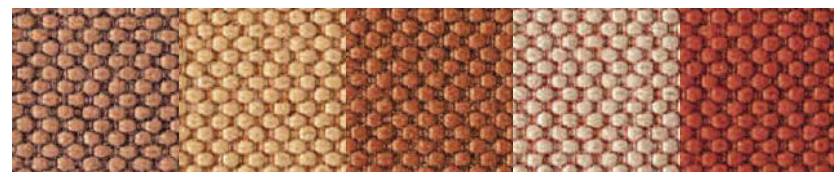
112 113

La pelle, conciata al cromo, deriva da un'accurata selezione di bovini di origini europea, morbida ed elegante trova la sua naturale collocazione in ambienti direzionali e di rappresentanza.
Our leather is chrome tanned and comes from an accurate selection of european cattle, soft and elegant it is ideal in managerial and representative offices/spaces.

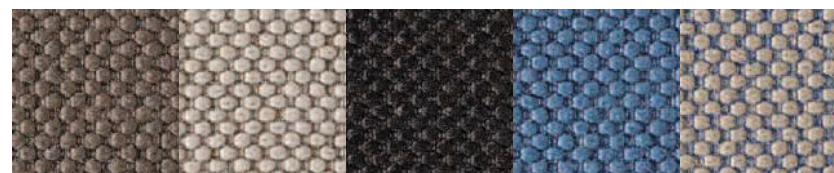
Peso / Weight. 620 gr/mtl - Composizione / Composition. 100% Pelle bovina / Bovine leather
Omologazione / Flammability. EN1021-1 e EN1021-2. Cl.1
Uso / Use. Ufficio / Office, Collettività / Waiting rooms, Scuola / School
Pulizia / Cleaning. Usare con regolarità l'aspirapolvere / Use a vacuum cleaner regularly

Leggere differenze di colore tra differenti partite sono da considerarsi normali
Slight color differences between one lot and another have to be considered within commercial tolerance.

Merit by kvadrat | cl. 1



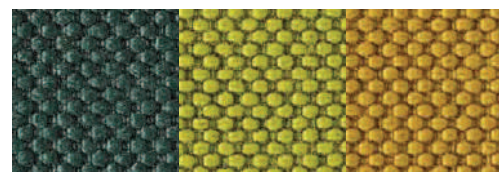
K35 K31 K32 K34 K37



K41 K42 K04 K08 K09



K05 K10 K18 K21 K17



K19 K22 K25

Designer Maharam Design Studio
Peso / Weight. 500 gr/mtl
Composizione / Composition. 76% poliestere riciclata / recycled polyester, 24% poliestere / polyester
Resistenza al fuoco / Burning behaviour. EN 1021-1/ 1021-2
Resistenza all'abrasione / Abrasion. 85.000 Martindale
Uso / Use. Ufficio / Office, Collettività / Waiting rooms, Scuola / School
Pulizia / Cleaning. Usare con regolarità l'aspirapolvere. Lavabile a mano 60° / Use a vacuum cleaner regularly. Hand washable at 60°

Leggere differenze di colore tra differenti partite sono da considerarsi normali
Slight color differences between one lot and another have to be considered within commercial tolerance.

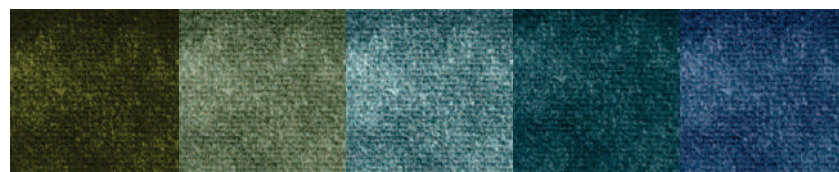
Velluto Dècontractè by RUBELLI



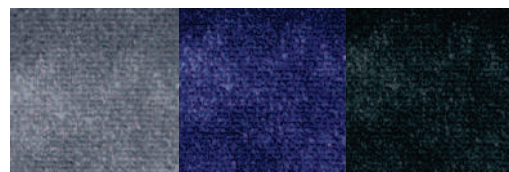
001 002 003 004 005



006 007 008 009 010



011 012 013 014 015



016 017 018

Peso / Weight. 590 gr/mtl

Composizione / Composition. 61% Acrilico / Acrylic, 19% Cotone / Cotton, 10% Poliestere / Polyester, 10% SPU (Pile: 100% Acrylic)

Resistenza all'abrasione / Abrasion. (Martindale) UNI EN ISO 12947:2000 40.000

Uso / Use. Ufficio / Office, Collettività / Waiting rooms, Scuola / School

Pulizia / Cleaning. Usare con regolarità l'aspirapolvere a beccuccio liscio, senza spazzolare (lavaggio a secco)

Use a vacuum cleaner regularly to plain tip, do not brush (dry cleaning)

Pelle / Leather Seta



161 162 163 164 165

Pelle bovina conciata al cromo
Chrome tanned bovine raw hide

Composizione / Composition. 100% Pelle bovina / Bovine leather

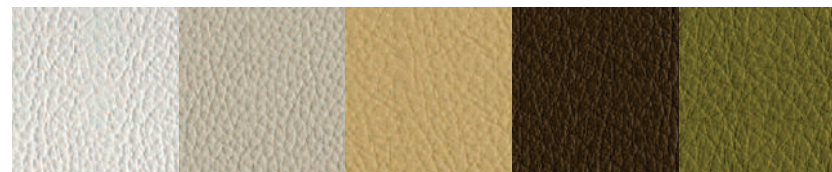
Uso / Use. Ufficio / Office, Collettività / Waiting rooms, Scuola / School

Pulizia / Cleaning. Usare prodotti specifici o il nostro Kit Pelle / Use specific products or our leather kit

Leggere differenze di colore tra differenti partite sono da considerarsi normali

Slight color differences between one lot and another have to be considered within commercial tolerance.

Pelle / Leather Elegance



131 132 133 134 135



136 137 138 139 140

Pelle di prima qualità, conciata al cromo, deriva da un'accurata selezione di bovini di origine extra europea, raffinata al tatto ed elegante alla vista, ideali per ambienti direzionali e di rappresentanza

Leather of first quality, chrome tanned, derives from a careful selection of bovines, refined and elegant finds its collocation in directional environment

Composizione / Composition. 100% Pelle bovina / Bovine leather

Uso / Use. Ufficio / Office, Collettività / Waiting rooms, Scuola / School

Pulizia / Cleaning. Usare prodotti specifici o il nostro Kit Pelle / Use specific products or our leather kit

Leggere differenze di colore tra differenti partite sono da considerarsi normali

Slight color differences between one lot and another have to be considered within commercial tolerance.

Premium Leather | 7

