

**TONON** materials

# the company

Passion, experience, experimentation: since 1926 pieces of furniture with an international design for the residential and ho.re.ca. world.

Thanks to the support of leading international designers, our style is eclectic and cosmopolitan. Our philosophy focuses on pursuing the correct balance between matter and form, aesthetics and function, producibility and originality. We combine the value of "doing well" with the constant search for the best solutions, in order to create chairs and furnishings for everyday use which can last over time, making the living of every environment, at home as in hotel, in restaurant as in office, a moment of well-being.



# sustainability and environment

*"Time and sustainability are incredibly intertwined. For us this means producing objects in the best possible way, so they can last over time. But that is not all. Sustainability is supporting: for us it means being a team of people who work together, supporting those who need it, encouraging to do better and better."*

*CEO Matteo Tonon*



# INDEX

## FABRICS

Velvy - cat.2 pag. 06

Noah - cat.4 pag. 08

Nabucco Plus - cat.4 pag. 10

Yacht Regatta - cat.4 pag. 12

Nordic - cat.4 pag. 14

Moss - cat.4 pag. 16

Clou - cat.6 pag. 18

Privilege - cat.6 pag. 20

## LEATHERS

Polo - cat.7 pag. 22

Soft - cat.9 pag. 24

Savana - cat.9 pag. 26

Gala - cat.10 pag. 27

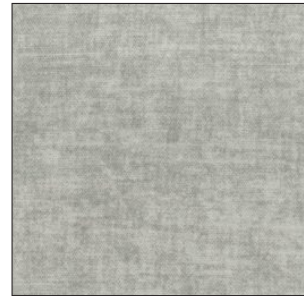
PU "SOFT TOUCH" pag. 28

WOODS pag. 30

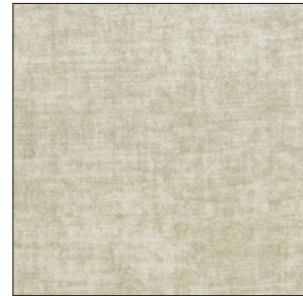
STEELS pag. 31

ROPES pag. 32

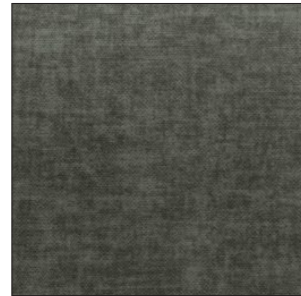
# Velvy category 2 - Fabric



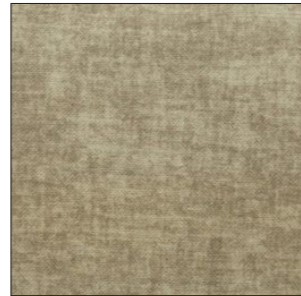
260



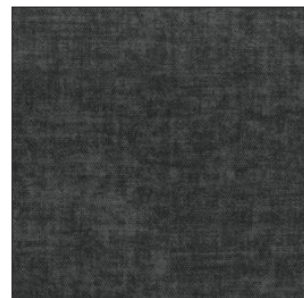
261



262



263



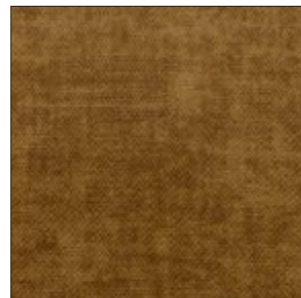
264



265



266



267



268



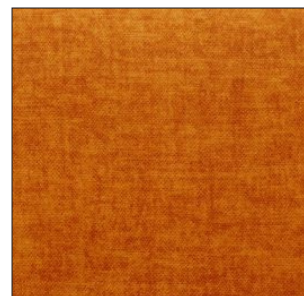
269



270



271



272



273



274



275

# Velvy category 2 - Fabric

	Unità di misura/ Measurement Unit	Risultati/Results	Test
Altezza / Width	cm	140 cm	
Composizione / Composition	%	100% pl	
Peso / Weight	gr/mtl	560	
Martindale / Abrasion Resistance	cicli / cycles	>70.000	ISO 12947-2 2016
Pilling		4 - 5	ISO 12945-1 2000
Resistenza della cucitura / Seam Strength	N	Ordito / Warp : 304 N	ISO 13935-2 2014
		Trama / Weft : 609 N	
Resistenza allo slittamento della cucitura / Seam Slippage	mm	Ordito / Warp : 2,0 mm	ISO 13936-2 2004
		Trama / Weft : 2,0 mm	
Solidità del colore alla luce / Colour Fastness to light	scala / range 1:8	4	ISO 105-B02 2014
Solidità del colore al lavaggio a secco / Colour Fastness to dry cleaning		4 - 5	ISO 105-D01 2010
Solidità del colore allo sfregamento / Colour Fastness to rubbing		Secco / Dry: 4 - 5	ISO 105-X12 2016
		Umido / Wet: 4 - 5	

## Manutenzione / Cleaning Instructions



Temperatura massima 30° C / Maximum 30° C



Candeggio non ammesso / Do not bleach



Temperatura massima 110° / Iron at low temperature



Non asciugare in asciugatrice / Do not tumble dry



Non asciugare al sole / Do not dry in the sun

Non strizzare / Do not wring out or twist



Lavare a secco / Professional dry-cleaning

## Caratteristiche / Features

Antimacchia / Antistain

Idrorepellente / Water repellent

## Trattamento Macchie / Stain Treatment

**Penna** : smacchiabile con acqua, in caso di macchie ostinate intervenire con acqua e sapone neutro.

**Pen**: stain removal with water. To use water and neutral soap to remove stubborn stain.

**Birra - Caffè - Cioccolato - Latte - Pomodoro - Succo** :

Smacchiabile con acqua, in caso di macchie ostinate intervenire con acqua e sapone neutro.

**Beer - Coffee - Chocolate - Milk - Tomato - Juice** :

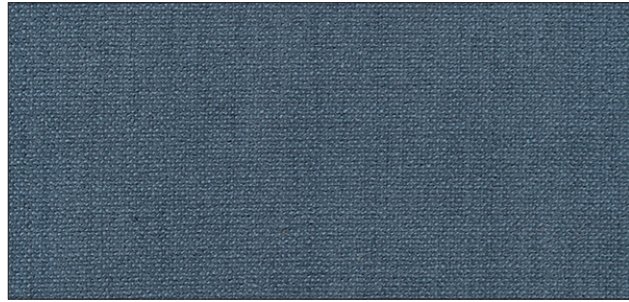
Stain removal with water. To use water and neutral soap to remove stubborn stain.

Nessuna garanzia per danni causati da interventi non corretti, detersivi non adatti o uso improprio.

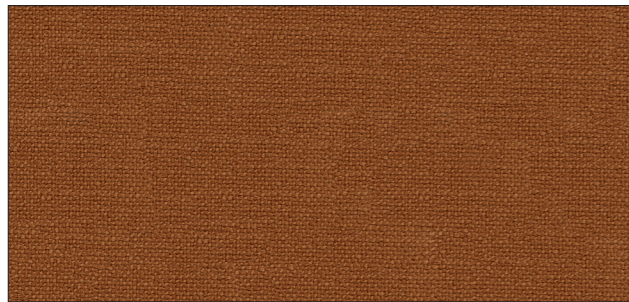
No warranty will be assumed for damage caused by incorrect care, unsuitable cleaners or improper use.

I COLORI SONO PURAMENTE INDICATIVI - COLORS ARE PURELY INDICATIVE -  
LES COULEURS SONT PUREMENT INDICATIVES - DIE FARBABBILDUNGEN DER MATERIALIEN SIND REIN INDIKATIV

# Noah category 4 - Fabric



Y45



Y26



Y20



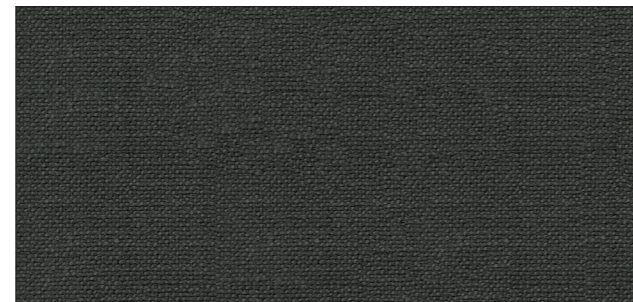
Y54



Y05



Y18



Y52



# Noah category 4 - Fabric

FABRIC NOAH, MADE OF 100% RECYCLED YARN

"Noah" un nuovo tessuto nella collezione Tonon. Il nostro pensiero è che sia molto importante rispettare il nostro pianeta. Il tessuto Noah è stato progettato proprio per questo motivo. Il tessuto Noah viene prodotto a Barcellona ed è realizzato con filato riciclato al 100%, che deriva dalle fibre ottenute dal recupero delle bottiglie in PET e da tessuti di scarto logorati. Il recupero e il riutilizzo dei rifiuti e il rispetto delle nostre risorse contribuiscono a far crescere il concetto di sostenibilità e a creare una società sempre più consapevole. Offriamo a voi, nostri clienti, questo materiale nuovo e innovativo sperando di dare un piccolo contributo per salvare il nostro pianeta insieme. Grazie!

"Noah" a new fabric in the Tonon collection. We think it's important to respect our planet. The fabric Noah was designed with this purpose. The fabric Noah, made in Barcelona, is produced from 100% recycled yarn, which is obtained from recycled fibers from PET bottles and worn fabric scraps. The recovery and reuse of waste and the respect for our resources contribute to sustainable thinking and a more conscious society. We offer you as our customers, this new and innovative material, hoping to give a small contribution to save our planet together with you. Thank you!

"Noah" ein neuer Stoff in der Tonon-Kollektion. Wir denken, es ist wichtig, unseren Planeten zu respektieren. Der Stoff Noah wurde zu diesem Zweck entworfen. Der in Barcelona hergestellte Stoff Noah wird aus 100% recycelten Garn hergestellt, das aus recycelten Fasern von PET-Flaschen und abgenutzten Stoffresten gewonnen wird. Die Verwertung und Wiederverwendung von Abfällen und der Respekt vor unseren Ressourcen tragen zu nachhaltigem Denken und einer bewussteren Gesellschaft bei. Wir bieten Ihnen als unseren Kunden dieses neue und innovative Material an, in der Hoffnung, gemeinsam mit Ihnen einen kleinen Beitrag zur Rettung unseres Planeten zu leisten. Vielen Dank!

Characteristics	Specifications	Care	Ignitability	Environment
<p><b>Total composition</b> 100% PES REC</p>  <p><b>Width</b> 140 + 4cm</p> <p><b>Weight</b> 543 gr/m<sup>2</sup> ± 5 % 760 gr/lm ± 5 %</p> <p><b>Custom code</b> UE: 5801.36.00 USA: 5801.36.00.20</p> <p><b>Laboratory test number</b> IN-00825-2020-3</p>	<p><b>Seam slippageresistance (mm)</b> EN ISO 13936/2:2004 3 2,5</p> <p><b>Abrasion resistance (End point)</b> EN ISO 12947-2:1998 &gt;100.000</p> <p><b>Pilling resistance</b> EN ISO 12945/2:2000 4-5</p> <p><b>Lightfastness</b> EN ISO 105-B02:1998 &amp; 105 B02/A01:2002 5-6</p> <p><b>Colour fastnessto rubbing</b> EN ISO 105-X12:2002 4-5 4-5</p>	<p><b>Soiling and cleanability</b> FORD FILTM BN 112-08:2005 4-5</p> <ul style="list-style-type: none"> <li>Spot-cleaning with soap and water</li> <li>No chemicals needed for cleaning</li> <li>Machine-washable</li> </ul> <p><b>Washing conditions</b> 30, 40, 60, P, W</p> <p><b>Dimensional change domestic washing and drying (%)</b> EN ISO 3759:2008, EN ISO 6330:2000, EN ISO 5077:2008 -1,80% -1,40%</p>	<p><b>B55852Source 0</b> ✓</p> <p><b>B55852Source 1</b> UPON REQUEST ✓</p> <p><b>EN1021-Part 1</b> ✓</p> <p><b>EN1021-Part 2</b> UPON REQUEST ✓</p> <p><b>CAL TB 117</b> ✓</p> <p><b>NFPA 260</b> ✓</p> <p><b>BS 7176 Low Hazard</b> UPON REQUEST ✓</p> <p><b>UNI 9175 Class 3IM</b> UPON REQUEST ✓</p>	<p><b>Environmental composition</b></p>  <p>• Recycled yarn 100%</p> <ul style="list-style-type: none"> <li>GRS Recycled PET bottles 81%</li> <li>GRS Recycled PES waste 19%</li> </ul> <p><b>Sustainability</b></p> <ul style="list-style-type: none"> <li>Oeko-tex certified</li> <li>REACH approved chemicals and dyes</li> <li>Biocide and PFCs free</li> <li>Zero-waste production</li> <li>Manufactured under ISO 9001 and ISO 14001 standards</li> <li>Made in Barcelona (EU)</li> </ul>
<p><b>Notes</b> This fabric has been designed and manufactured with 100% recycled materials. Variations in weave, shading, slubs, and texture give this fabric its unique personality and form part of its design.</p> <p><b>Attention</b> When confectioning or washing a sofa cover with velcro, attach a protective strip to avoid damage to the fabric.</p>			<p><b>Logos:</b> AENOR, REACH, OEKO-TEX® STANDARD 100</p>	

I COLORI SONO PURAMENTE INDICATIVI - COLORS ARE PURELY INDICATIVE - LES COULEURS SONT PUREMENT INDICATIVES - DIE FARBABBILDUNGEN DER MATERIALIEN SIND REIN INDIKATIV

# Nabucco Plus category 4 - Fabric



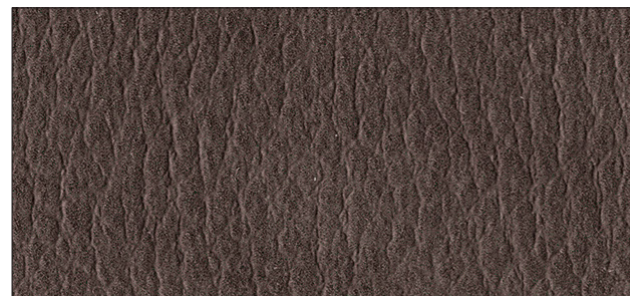
4N1



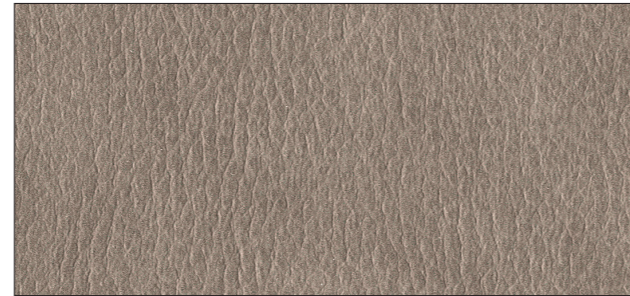
4N3



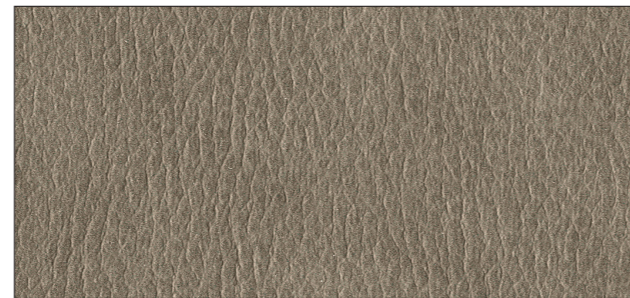
4N5



4N7



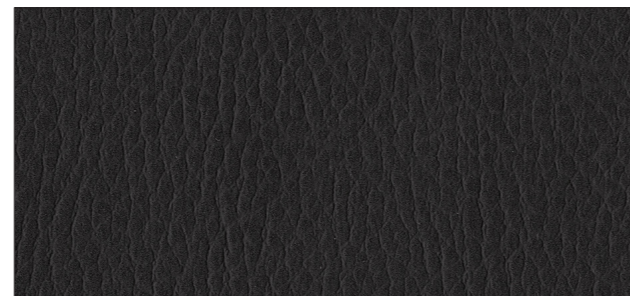
4N2



4N4



4N6



4N8

# Nabucco Plus category 4 - Fabric

**customs code**

59031090.

**use**

upholstered furniture.

**features**

83% pvc - 11% polyester - 6% cotton, width cm ± 140, weight ± 760 g/m<sup>2</sup>, thickness ± 1,30 mm.

**roll length**

approx. 30 lm., can also be cut-to-length at an extra cost.

**abrasion resistance**

> 25.000 rubs, ISO 5470-2.

**colour fastness to light**

4/5, ISO 105 B02.

**fastness to rubbing**

dry 4/5, wet 4/5, ISO 105 X12.

**tensile strength**

warp > 350 N, weft > 250 N, ISO 1421.

**sustainability**

phthalate free.

**fire resistance**

1IM - UNI 9175; EN 1021 1/2; BS 5852 part 1; BS 5852 crib 5; only on request, min 300 m; California TB 117-2013; IMO FTP Code 307 part 8.

**attention**

slight colour differences between different batches are allowed, we assume no responsibility for the transfer of colour/pigment caused by clothing and accessories.



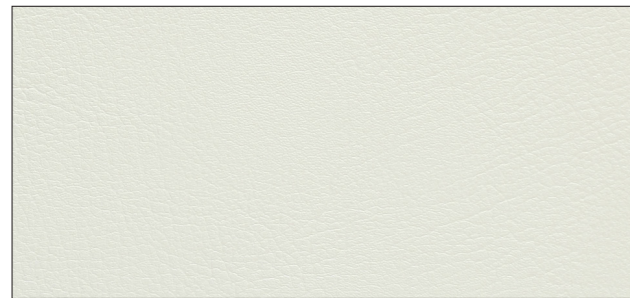
fireproof imo-med proposition 65

I COLORI SONO PURAMENTE INDICATIVI - COLORS ARE PURELY INDICATIVE -  
LES COULEURS SONT PUREMENT INDICATIVES - DIE FARBABBILDUNGEN DER MATERIALIEN SIND REIN INDIKATIV

# Yacht Regatta category 4 - Fabric



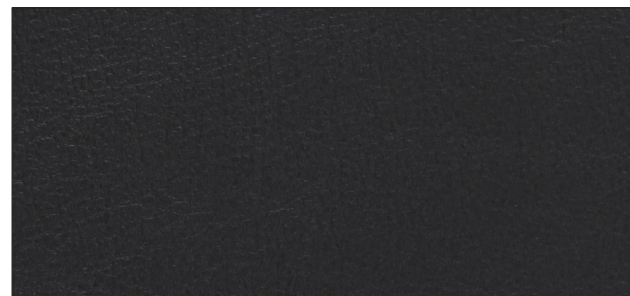
4Y1



4Y3



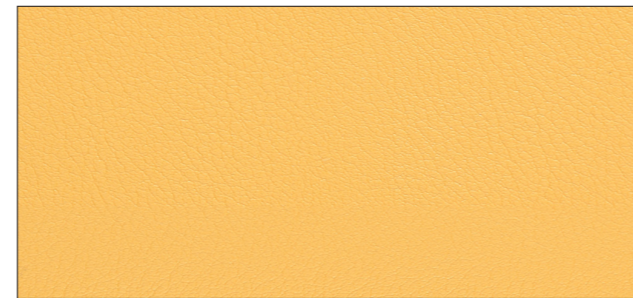
4Y5



4Y7



4Y2



4Y4



4Y6



4Y8

# Yacht Regatta category 4 - Fabric

**customs code**

59031090.

**use**

upholstered furniture, medical, outdoor.

**features**

89% pvc - 11% polyamide, width cm ± 140, weight ± 690 g/m<sup>2</sup>, thickness ± 1,20 mm.

**roll length**

approx. 25 lm., can also be cut-to-length at an extra cost.

**abrasion resistance**

> 250.000 rubs, ISO 5470-2.

**colour fastness to light**

6, ISO 105 B02.

**fastness to rubbing**

dry 4/5, wet 4/5, ISO 105 X12.

**tensile strength**

warp 400 N/5 cm, weft 100 N/5 cm, ISO 1421.

**sustainability**

phthalate free.

**fire resistance**

1IM - UNI 9175; EN 1021 1/2; BS 5852 part 1;

NF P 92 507 M2; NFPA 260 Class 1;

California TB 117-2013; IMO FTP Code 307 part 8.

**attention**

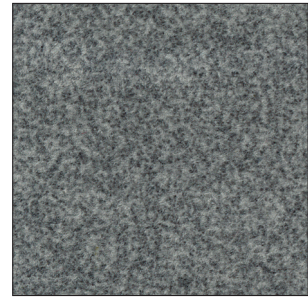
slight colour differences between different batches are allowed, we assume no responsibility for the transfer of colour/pigment caused by clothing and accessories.



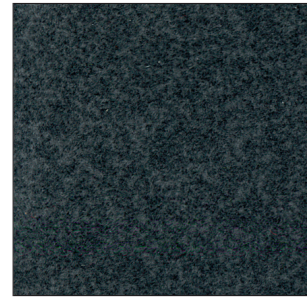
fireproof imo-med medical outdoor easy clean eco-friendly proposition 65

I COLORI SONO PURAMENTE INDICATIVI - COLORS ARE PURELY INDICATIVE -  
LES COULEURS SONT PUREMENT INDICATIVES - DIE FARBABBILDUNGEN DER MATERIALIEN SIND REIN INDIKATIV

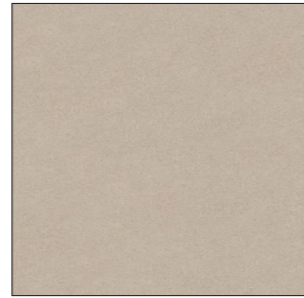
# Nordic category 4 - Fabric



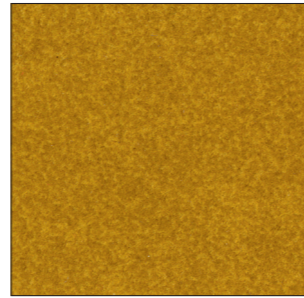
4NA



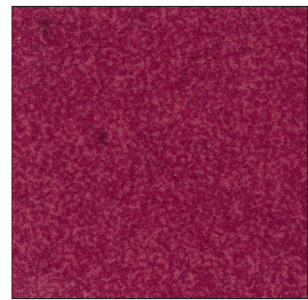
4NB



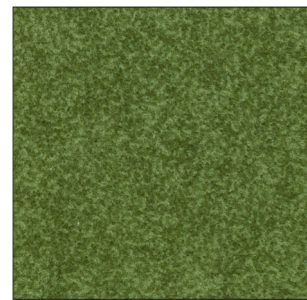
4NE



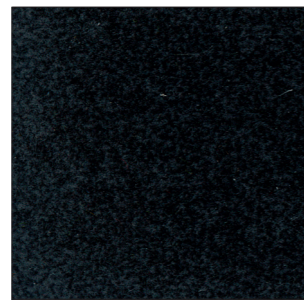
4NH



4NL



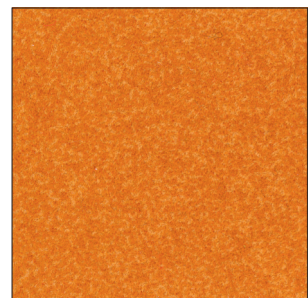
4NM



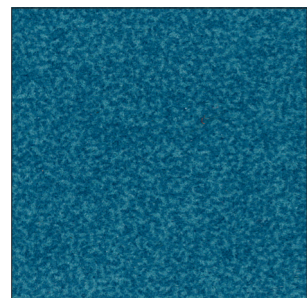
4NC



4NF



4NJ



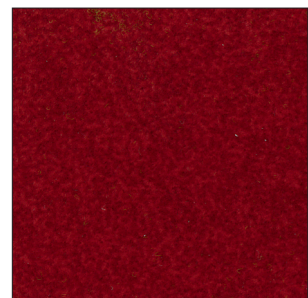
4NN



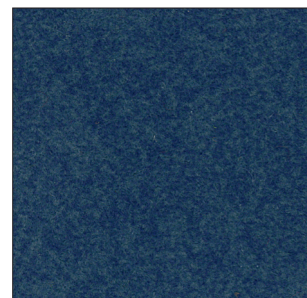
4ND



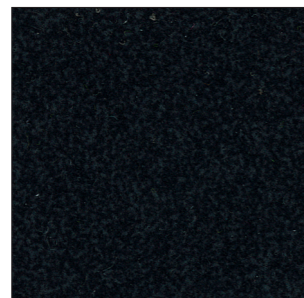
4NG



4NK



4NP



4NQ

# Nordic category 4 - Fabric

## Technical Specifications

**Composition:** 50% PES, 15% PA, 35% ACRIL

**Width:** 140 cm. UNE 400335

**Weight m2:** 410 gr/m2

**Abrasion resistance:** 250.000 cycles UNE EN ISO 12947

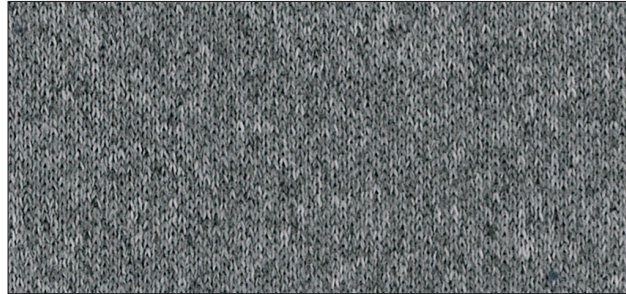
**Pilling resistance:** > 4 UNE EN ISO/DIS 12945-2

**Dye resistance to light:** 6 Good (ISO 105-B02)





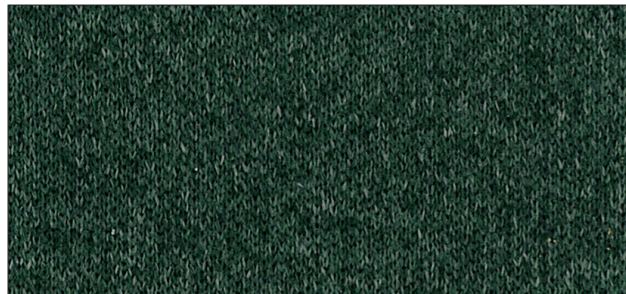
# MOSS category 4 - Fabric



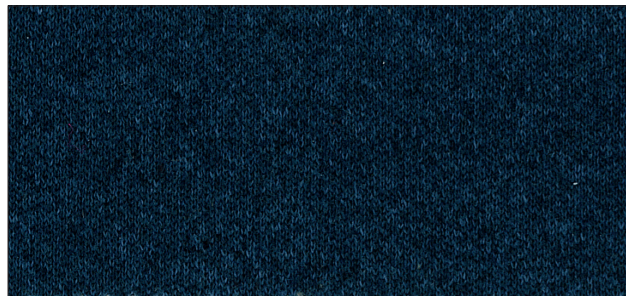
4MA



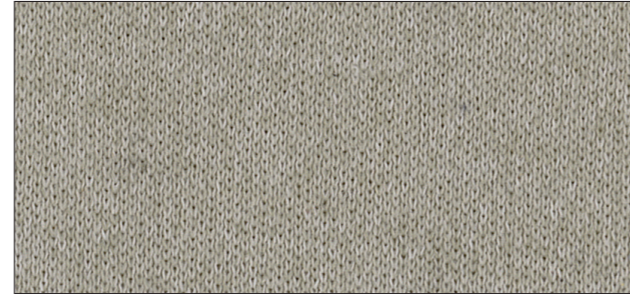
4MC



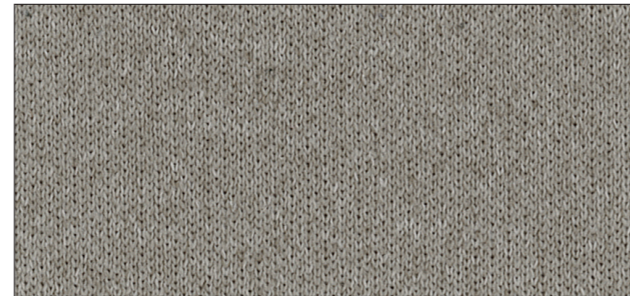
4ME



4MG



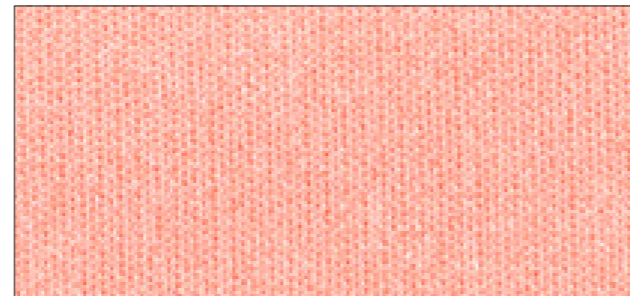
4MB



4MD



4MF



4MH

# MOSS category 4 - Fabric

Composition	100%PES FR	
Width	175 ± 2%	
Linear Weight	854 gr/ml ± 5%	
Seam slippage resistance EN ISO 13936/2	WARP	WEFT
	1,7	2,5
Abrasion Resistance EN ISO 12947/2	End Point (A) Fully worn off (B)	
	50.000 (A)	
Pilling resistance EN ISO 12945/2	Change aspect 3000c	
	3-4	
Assessment of ignitability	BS5852 Sche. Part 4 Source 0 / 1	
	BS7176 Low hazard	
Lightfastness EN ISO 105-B02	EN 1021 Part 1 / 2	
	UNI 9175 IM Clase 1.IM	
	CAL TB 117:2013	
	NFPA 260:2013	
	DIN 4102 B2	
	NF D 60 013	
	IMO FTB 2010 Part 8 A 652 (16)	
	NF P-92:507 M1	
	PASS	
	6-7	
Colour fastness to rubbing EN ISO 105-X12	DRY	WET
	5	4-5
Dimensional change in domestic washing and drying EN ISO 3759 / EN ISO 6330 / EN ISO 5077	WARP	WEFT
	-3%	1,5%
Acoustic test sound absorption	EN ISO 354:2004	
	EN ISO 11654:1998	
	ASTM C423	
Cleaning		

I COLORI SONO PURAMENTE INDICATIVI - COLORS ARE PURELY INDICATIVE -  
LES COULEURS SONT PUREMENT INDICATIVES - DIE FARBABBILDUNGEN DER MATERIALIEN SIND REIN INDIKATIV

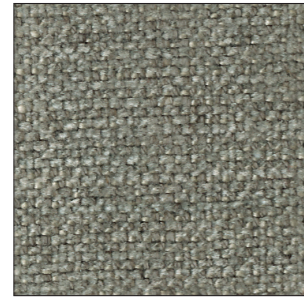
Clou category 6 - Fabric



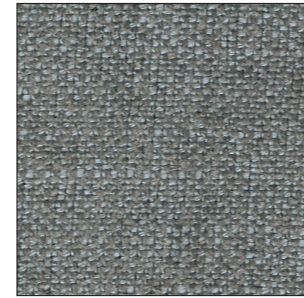
H20



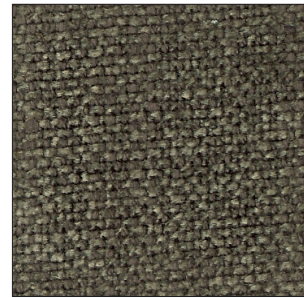
H04



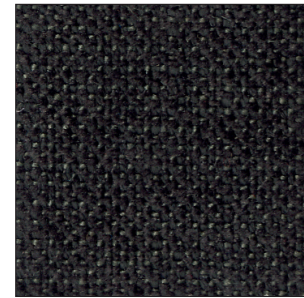
H10



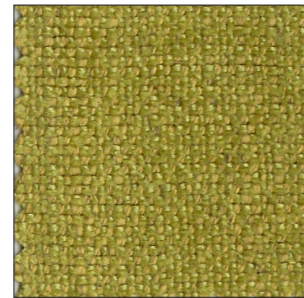
H07



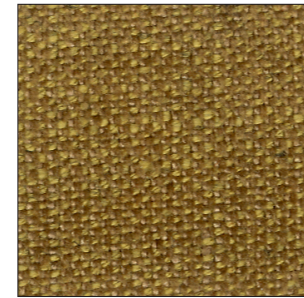
H05



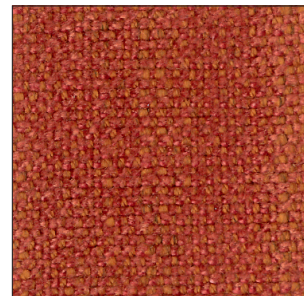
H06



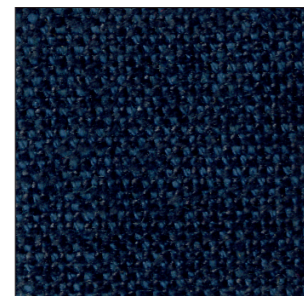
H16



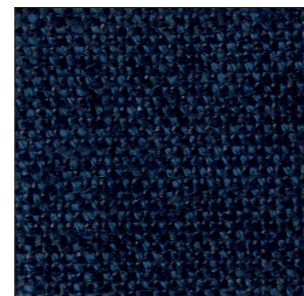
H17



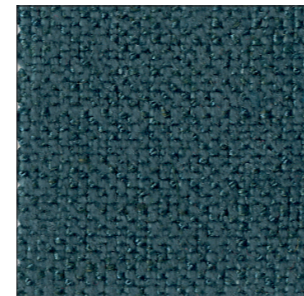
H18



H09



H08



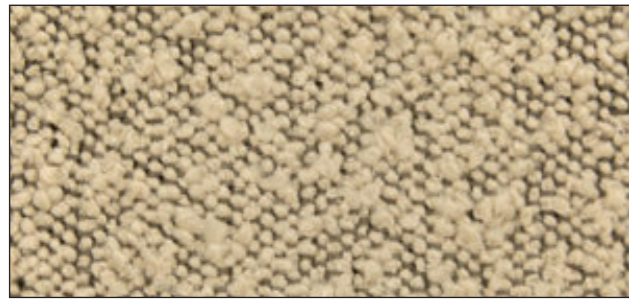
H14

Clou category 6 - Fabric

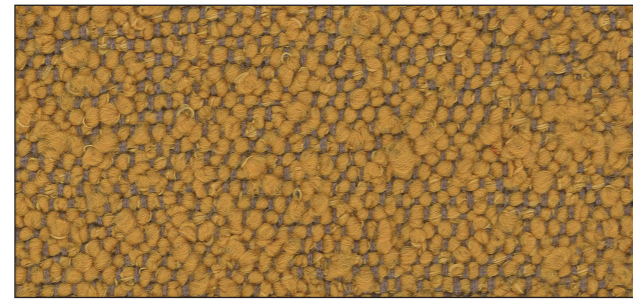
<b>Material</b>	48% viscose
<b>Weight</b>	610 g/lm
<b>Width</b>	140 cm
<b>Abrasion resistance</b>	22.000 rubs martindale (EN ISO 12947-2)
<b>Colour fastness to light</b>	4-5
<b>Maintenance</b>	Ⓟ ⊗ ⊠ ☰

I COLORI SONO PURAMENTE INDICATIVI - COLORS ARE PURELY INDICATIVE -  
LES COULEURS SONT PUREMENT INDICATIVES - DIE FARBABBILDUNGEN DER MATERIALIEN SIND REIN INDIKATIV

# Privilege category 6 - Fabric



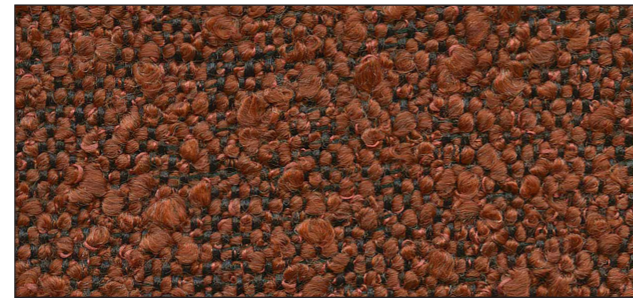
6P8



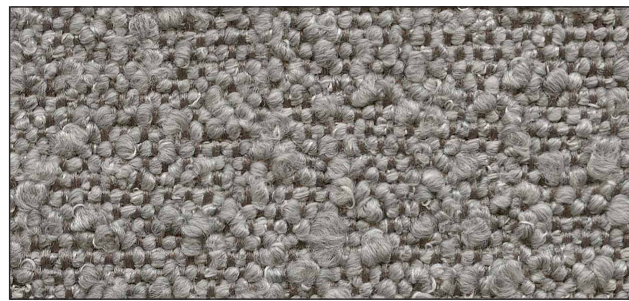
6P1



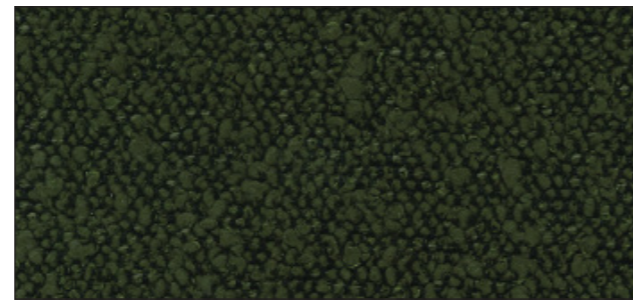
6P2



6P5



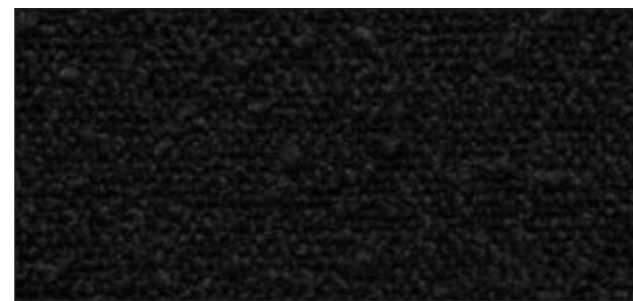
6P3



6P6



6P4



6P9

# Privilege category 6 - Fabric



6P7

## TECHNICAL INFORMATION

Composizione / Composition: 95% PL 5% PC

Peso / Weight: 855 gr/ml

Altezza / Height: 145 cm

Martindale: >80.000

Pilling: 4



I COLORI SONO PURAMENTE INDICATIVI - COLORS ARE PURELY INDICATIVE -  
LES COULEURS SONT PUREMENT INDICATIVES - DIE FARBABBILDUNGEN DER MATERIALIEN SIND REIN INDIKATIV

# Polo category 7 - Leather



P10



P47



P72



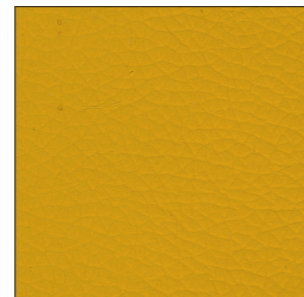
P30



P32



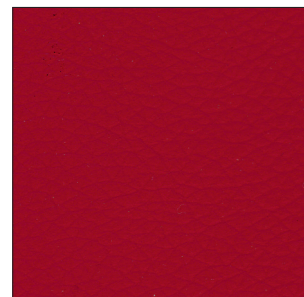
P31



P36



P39



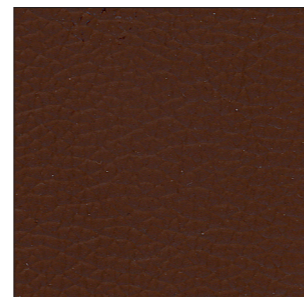
P42



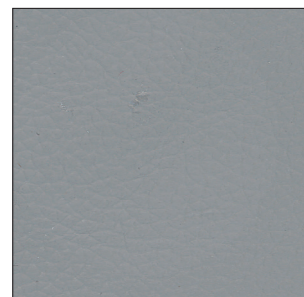
P44



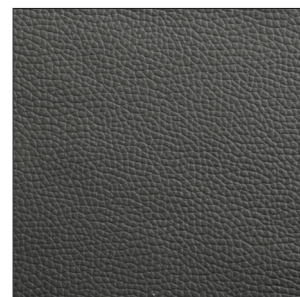
P23



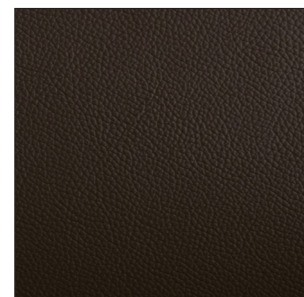
P24



P54



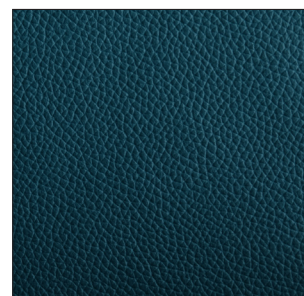
P58



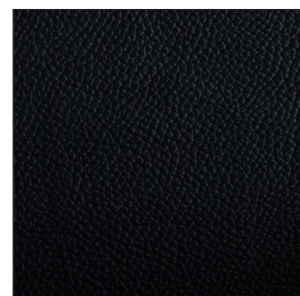
P25



P84



P55



P60

# Polo category 7 - Leather

Thickness	0,9/1,1 mm		<b>Fire resistance</b>
Origin	Raw Hides		British Standard BS 5852 Part I (1979)
Place of origin	European		N° 0: Cigarette Test <span style="float: right;">passes</span>
Tanning	Chrome salts		N°1: Match Test
Dyeing	Anline throught - dyeing		
Finishing	Pigments finishing		
Typology	Corrected grain		
Light fastness xenon lamp	UNI EN ISO 105 B02	Value > 8 Blu scale	Imo FTP part 8-Resolution A652 (16) NI/0: Cigarette test NI/1: Match Test <span style="float: right;">passes</span>
Tear strenghe	UNI EN ISO 3377 - 1	42 N/mm	
Dry rub fastness	ISO 11640	500 cycles value 4/5 grey scale	
Wet rub fastness	ISO 11640	250 cycles value 4/5 grey scale	
Flex crack resistance	ISO 5402	> 50.000 cycles	
Adhesion of finish	UNI EN ISO 11644 2008 - Dedalo Srl (Arzignano - VI)	9 N/cm	TB 117-A11@2013:2013 Cigarette Test ( California) <span style="float: right;">passes</span>

I COLORI SONO PURAMENTE INDICATIVI - COLORS ARE PURELY INDICATIVE -  
LES COULEURS SONT PUREMENT INDICATIVES - DIE FARBABBILDUNGEN DER MATERIALIEN SIND REIN INDIKATIV

Soft category 9 - Leather



117



195



199



96



504



513



NH3



508



175



147



98



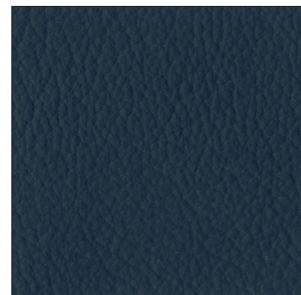
532



192



556



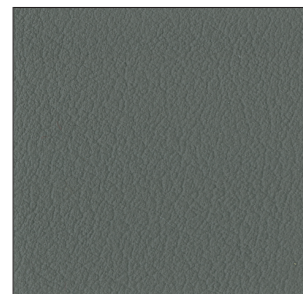
558



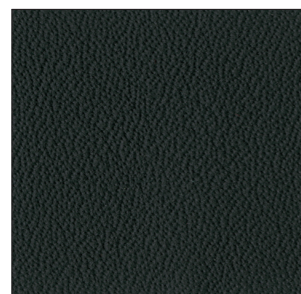
566



564



203



141



101

Soft category 9 - Leather

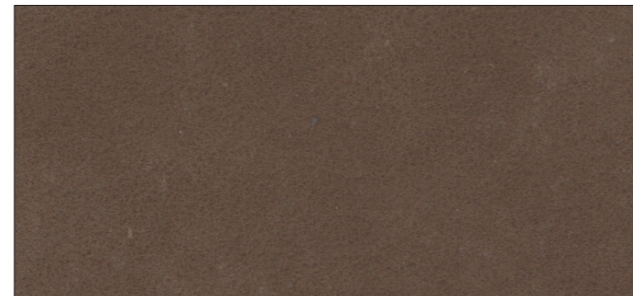
Thickness	1,1/1,2 mm	
Origin	Raw Hides	
Place of origin	European	
Tanning	Chrome salts	
Dyeing	Anline throught - dyeing	
Finishing	Water - based pigments	
Typology	Grain slightly corrected	
Light fastness xenon lamp	UNI EN ISO 105 B02	Value > 4 Blu scale
Tear strenghe	UNI EN ISO 3377 - 1	> 28 N/mm
Dry rub fastness	ISO 11640	500 cycles value 4 grey scale
Wet rub fastness	ISO 11640	80 cycles value 5 grey scale
Flex crack resistance	ISO 5402	25000 cycles
Adhesion of finish	UNI EN ISO 11644 2008 - Dedalo Srl (Arzignano - VI)	> 7,5 N/cm
Fire resistance	British Standard BS 5852 Part I (1979) N° 0: Cigarette Test N°1: Match Test	pass

I COLORI SONO PURAMENTE INDICATIVI - COLORS ARE PURELY INDICATIVE -  
LES COULEURS SONT PUREMENT INDICATIVES - DIE FARBABBILDUNGEN DER MATERIALIEN SIND REIN INDIKATIV

# Savana category 9 - Leather



968



961



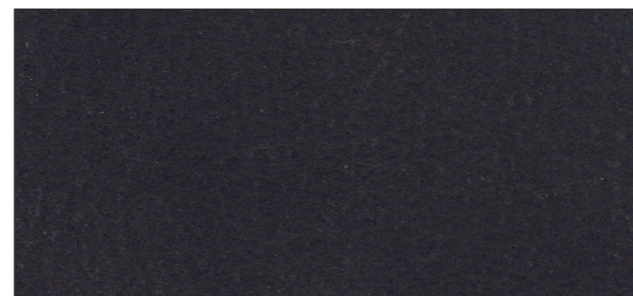
963



964



967



974

Thickness	1,3/1,5 mm
Origin	Raw Hides
Place of origin	European
Tanning	Chrome salts
Dyeing	Aniline through - dyeing
Typology	nubuck brushed by hand
Light fastness xenon lamp	UNI EN ISO 105 B02 Value > 3 Blu scale UNI EN ISO 3377 - 1 > 45 N
Tear strenghe	ISO 11640 500 cycles value 4 grey scale
Dry rub fastness	ISO 11640 250 cycles value 3/4 grey scale
Wet rub fastness	ISO 5402 > 50.000 cycles
Flex crack resistance	UNI EN ISO 11644 10,5 N/cm
Adhesion of finish	2008 - Dedalo Srl (Arzignano - VI)
Fire resistance	British Standard BS 5852 Part I (1979) N° 0: Cigarette Test N°1: Match Test passes

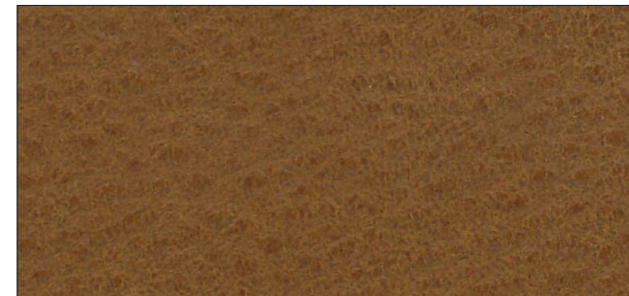
I COLORI SONO PURAMENTE INDICATIVI

COLORS ARE PURELY INDICATIVE

LES COULEURS SONT PUREMENT INDICATIVES

DIE FARBABBILDUNGEN DER MATERIALIEN SIND REIN INDIKATIV

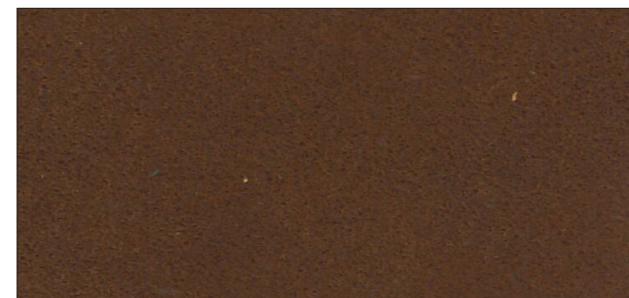
# Gala category 10 - Leather



J10



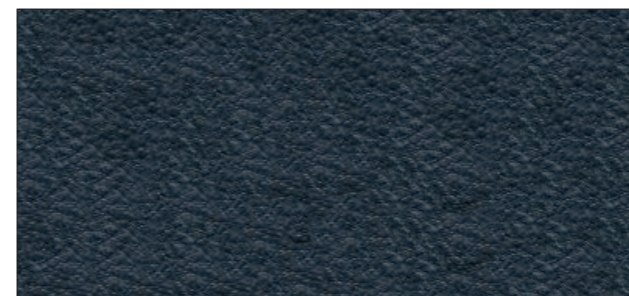
J11



J12



J13



J14

Tutti i modelli imbottiti possono essere rivestiti con la pelle cat. 10 applicando un supplemento del 10% sul prezzo della categoria 9.

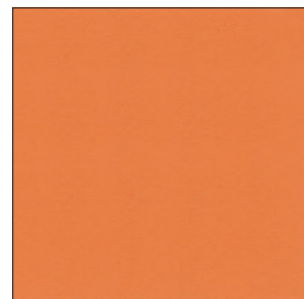
All models of our collection can also be supplied with leather category 10, applying a surcharge of 10% on the price of category 9

Alle gepolsterten Modelle können auch mit dem Leder der Kategorie 10 bezogen werden, Aufpreis: 10% auf den Preis der Kategorie 9

Tous les modèles rembourrés peuvent également être recouverts en cuir catégorie 10 avec un supplément de 10 % sur le prix de la catégorie 9

I COLORI SONO PURAMENTE INDICATIVI - COLORS ARE PURELY INDICATIVE - LES COULEURS SONT PUREMENT INDICATIVES - DIE FARBABBILDUNGEN DER MATERIALIEN SIND REIN INDIKATIV

# Polyuretane “Soft Touch”



X04 - ORANGE



X09 - SAND



X07 - BLACK



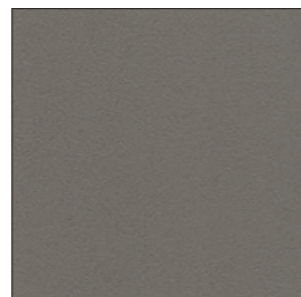
X15 - BROWN



X05 - RED



X10 - YELLOW



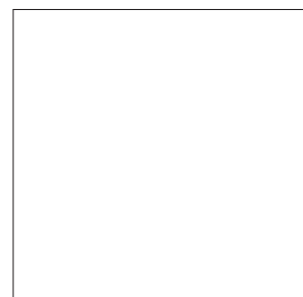
X16 - MUD



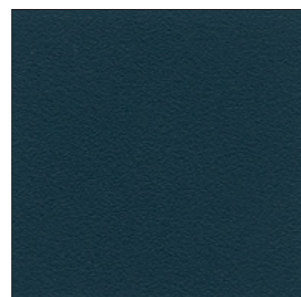
X03 - DARK GREY



X02 - LIGHT GREY



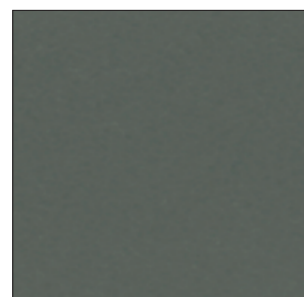
X01 - WHITE



X08 - BLUE



X19 - PIGEON BLUE



X21 - OLIVE GREEN



X22 - DUSTY PINK



X23 - PETROL

I COLORI SONO PURAMENTE INDICATIVI - COLORS ARE PURELY INDICATIVE -  
LES COULEURS SONT PUREMENT INDICATIVES - DIE FARBABBILDUNGEN DER MATERIALIEN SIND REIN INDIKATIV

## SOFT TOUCH CERTIFICATIONS

The material used by Tonon for this collection satisfy the following regulations:

- Surfaces strength to cold liquids EN 12720/97
- Surfaces strength to cold liquids synthetic urine - quick-acting disinfection EN 12720/2013
- Colour strength to rubbing EN ISO 11640:1998
- Flame resistance 1.IM - BS CRIB 5 Cigarette test - CAL 117
- Surfaces strength to cleaning products PTP 53/95
- Ace bleach test, ammonia test (sol.10%), Baysan multipurpose, Lyso-Form for kitchen, Viakal, Vetril, Vim liquid, Cif multipurpose, Cif with bleach, Saniform 360
- Accelerated ageing through lamp UV ASTM G 154 -06

## SOFT TOUCH COLLECTION BLEACH-CLEANABLE\*

### DISINFECTION OF THE “SOFT TOUCH COLLECTION” SUCCESSFULLY TESTED WITH A SOLUTION OF WATER AND 0.1% SODIUM HYPOCHLORITE.

With the measures prescribed in relation to the Corona virus, we are all facing new challenges. Hygiene measures have taken on a new importance. We all need to know who can protect us from viruses and bacteria. In the hotel and restaurant industry, this also includes sanitizing furniture. The new protocols for the restaurant and hotel industry prescribe sanitation after each guest and, if possible, to follow the recommendations of the World Health Organization. What is prescribed in the hospitality industry can also easily be carried out in everyday private life.

## THE PROTOCOLS PRESCRIBE:

All surfaces must be cleaned with a solution of water and 0.1% sodium hypochlorite (the solution is formulated by adding 50 ml of 5% household bleach in 2.5 liters of water). The mixture formulated fights bacteria and germs, guarantees maximum cleaning and ensures that clean surfaces are sanitized.

## WE TOOK UP THIS CHALLENGE AND TESTED OUR SOFT TOUCH COLLECTION WITH THIS FORMULA.

After 1000 cycles no changes were detected on the surface of the material and in the color. We are proud to inform you that the polyurethane used for “moon” facilitates quick and effective cleaning according to the most stringent sanitization protocols.

I COLORI SONO PURAMENTE INDICATIVI - COLORS ARE PURELY INDICATIVE -  
LES COULEURS SONT PUREMENT INDICATIVES - DIE FARBABBILDUNGEN DER MATERIALIEN SIND REIN INDIKATIV

# Wood Matt Finishing

BEECH



1.101 - NATURAL BEECH



1.111 - BEECH BLACK



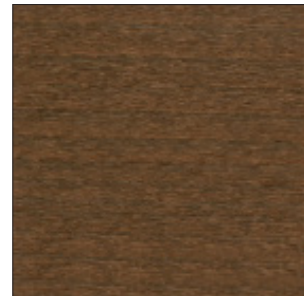
1.134 - BEECH BROWN



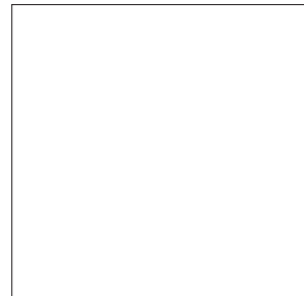
1.141 - BEECH  
NATURAL CHERRY



1.144 - BEECH WENGE



1.146 - BEECH  
AMERICAN WALNUT

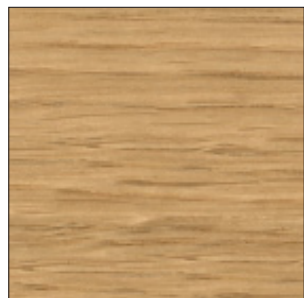


1.133 - WHITE MATT  
LACQUERED

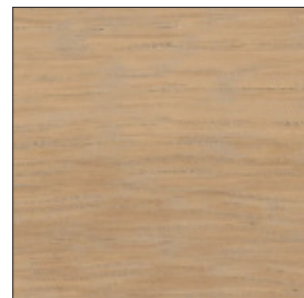


1.137 - BLACK MATT  
LACQUERED

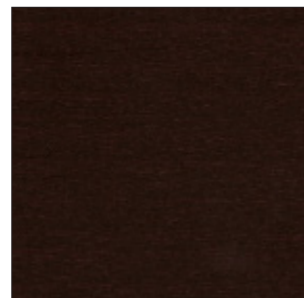
OAK



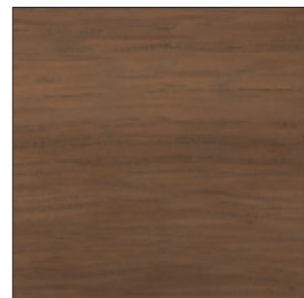
3.011 - OAK OILED



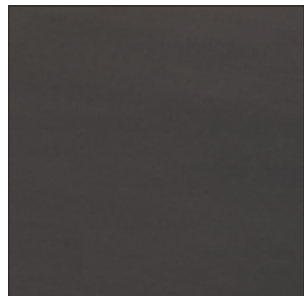
3.102 - NATURAL OAK



3.144 - OAK WENGE

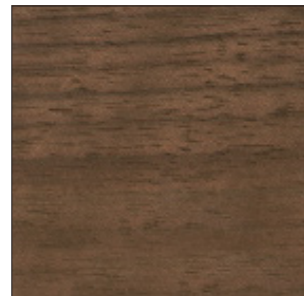


3.146 - OAK  
AMERICAN WALNUT

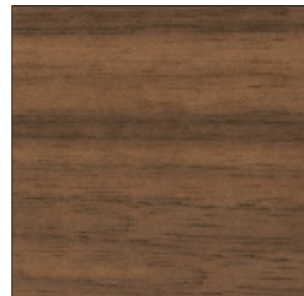


3.149 - OAK DARK GREY

AMERICAN WALNUT



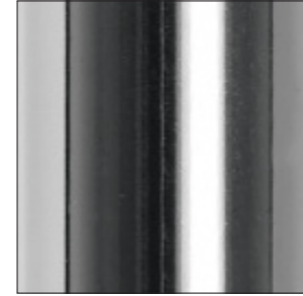
8.011 - AMERICAN WALNUT  
OILED



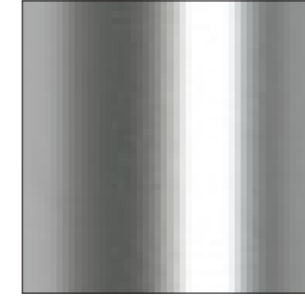
8.146 - NATURAL  
AMERICAN WALNUT

# Steel Finishing Lacquered

TONON



40 - CHROME



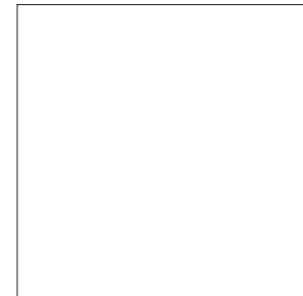
47 - MATT SATIN



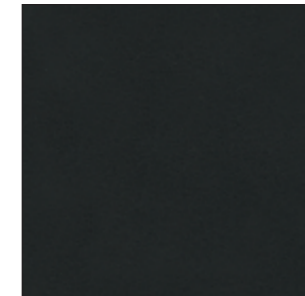
74 - MUD



76 - BURNISHED BROWN



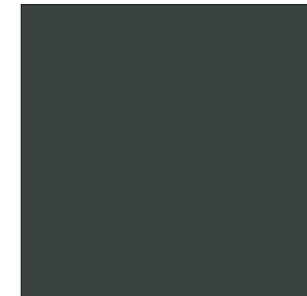
61 - WHITE



59 - DARK GREY



64 - BLACK



72 - GREY



78 - BRONZE

I COLORI SONO PURAMENTE INDICATIVI - COLORS ARE PURELY INDICATIVE -  
LES COULEURS SONT PUREMENT INDICATIVES - DIE FARBABBILDUNGEN DER MATERIALIEN SIND REIN INDIKATIV



# Ropes



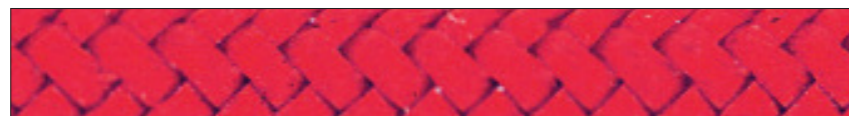
300 - BLACK



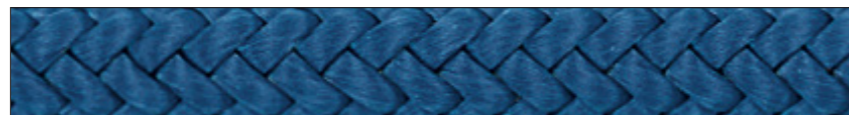
303 - BRONZE



305 - BLUE



313 - RED



321 - BLUE JEANS



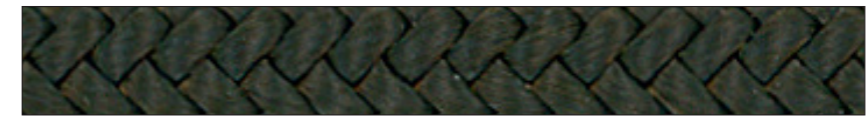
323 - GREEN BAMBOO



302 - LIGHT GREY



304 - BORDEAUX



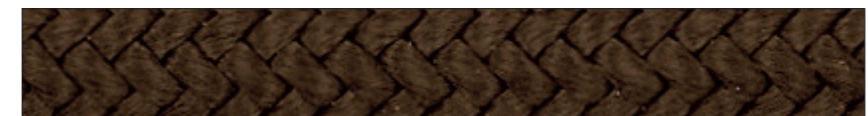
306 - OLIVE GREEN



316 - YELLOW



322 - LINEN



324 - COCOA

I COLORI SONO PURAMENTE INDICATIVI - COLORS ARE PURELY INDICATIVE -  
LES COULEURS SONT PUREMENT INDICATIVES - DIE FARBABBILDUNGEN DER MATERIALIEN SIND REIN INDIKATIV

I COLORI SONO PURAMENTE INDICATIVI - COLORS ARE PURELY INDICATIVE -  
LES COULEURS SONT PUREMENT INDICATIVES - DIE FARBABBILDUNGEN DER MATERIALIEN SIND REIN INDIKATIV

**TONON** materials