



# Burin Mini

BY PATRICIA URQUIOLA

# Burin Mini

BY PATRICIA URQUIOLA

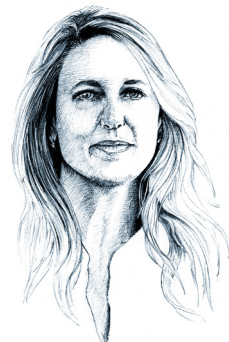
Technical Info EN

2011



Sculptural auxiliary table available in two levels.

Its strong personality makes it very interesting for home and facilities.



## Patricia Urquiola

Patricia Urquiola was born in Oviedo (Spain) and currently lives and works in Milan.

She graduated from the Faculty of Architecture at the Technical University of Madrid in 1989, after completing a thesis with Achille Castiglioni. From 1990 to 1992, she was assistant lecturer to both Achille Castiglioni and Eugenio Bettinelli at the Milan Polytechnic and the E.N.S.C.I. in Paris.

Between 1990 and 1996, she worked in the new product development office of De Padova and, with Vico Magistretti, signing the products: "Flower", "Loom sofa", "Chaise" and "Chaise Longue".

From 1993 to 1996, she worked with the architects de Renzio and Ramerino and was engaged in architectural design, showrooms, restaurants and franchising (Maska/Italy, Tomorrowland Stores/Japan, Des Pres/France).

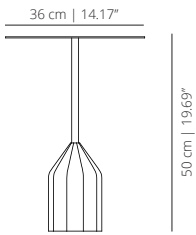
In 1996 she became head of the design department at Lissoni Associati, working for Alessi, Antares-Flos,

Artelano, Boffi, Cappellini, Cassina and Kartell, among others.

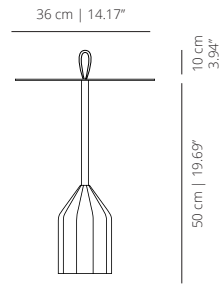
Her products were selected for the Italian Design 2001 exhibition. In 2001 she was chair of the jury for the 19th CDIM Design Award and was lecturer at the Domus Academy.

She is currently working in her own practice in Milan in the fields of design, exhibitions, art direction and architecture. Patricia Urquiola works for Alessi, B&B, Kartell, Molteni, Moroso, Coalesse and VICCARBE.

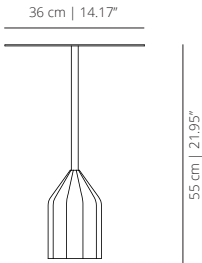
---

**BU50**low table height 50 | low table height 19 <sup>11</sup>/<sub>32</sub>

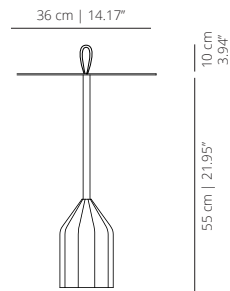
---

**BU50A**low table height 50 with handle | low table height 19 <sup>11</sup>/<sub>32</sub> with handle

---

**BU55**low table height 55 | low table height 21 <sup>21</sup>/<sub>32</sub>

---

**BU55A**low table height 55 with handle | low table height 21 <sup>21</sup>/<sub>32</sub> with handle

## FINISHES

### STRUCTURE /TOP

#### Matt Lacquered



white  
RAL 9003



black\*  
RAL 9005



grey  
RAL 7004



smoke  
RAL 1019



tobacco  
RAL 8028



silver  
RAL 9006



red  
RAL 3001



moustand  
RAL 1012



green  
RAL 6007



blue  
RAL 5024



sand  
NCS 3005Y50R



bronze

### HANDLE

#### Textile



white



black



red



blue



green



brown

## TECHNICAL INFO

Polyurethane foam base with steel counterweight (10kg). Calibrated steel tube structure powder coated in thermoreinforced polyester. Top in lacquered MDF. Table with single - color lacquered finish. High resistance technical textile handle.

### CERTIFICATIONS

UNE EN 15372:08

*\*The whole range of colours has a smooth lacquered finish except black, wich has a lacquered microtextured finish*



**viccarbe**