



# Tiers

BY PATRICIA URQUIOLA

# Tiers

BY PATRICIA URQUIOLA

Technical Info EN

2010



This unique modular table system creates an iconic look.

Two different models with different combinations of lacquered tops.

The multiple levels and attention to detail, together with the possibility to create interesting landscapes by combining several units, make this table a useful element for both domestic and contract use.

## Patricia Urquiola

Patricia Urquiola was born in Oviedo (Spain) and currently lives and works in Milan.

She graduated from the Faculty of Architecture at the Technical University of Madrid in 1989, after completing a thesis with Achille Castiglioni. From 1990 to 1992, she was assistant lecturer to both Achille Castiglioni and Eugenio Bettinelli at the Milan Polytechnic and the E.N.S.C.I. in Paris.

Between 1990 and 1996, she worked in the new product development office of De Padova and, with Vico Magistretti, signing the products: "Flower", "Loom sofa", "Chaise" and "Chaise Longue".

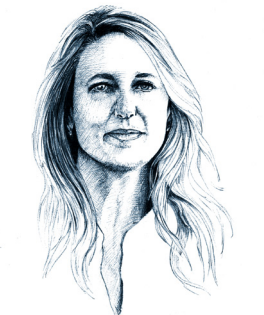
From 1993 to 1996, she worked with the architects de Renzio and Ramerino and was engaged in architectural design, showrooms, restaurants and franchising (Maska/Italy, Tomorrowland Stores/Japan, Des Pres/France).

In 1996 she became head of the design department at Lissoni Associati, working for Alessi, Antares-Flos, Artelano, Boffi, Cappellini, Cassina and Kartell, among others.

Her products were selected for the Italian Design 2001 exhibition. In 2001 she was chair of the jury for the 19th CDIM Design Award and was lecturer at the Domus Academy.

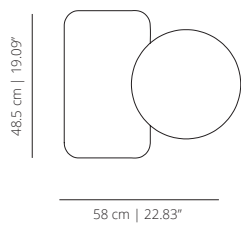
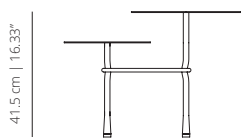
She is currently working in her own practice in Milan in the fields of design, exhibitions, art direction

and architecture. Patricia Urquiola works for Alessi, B&B, Kartell, Molteni, Moroso, Coalesse and VICCARBE.



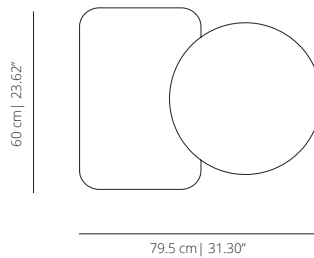
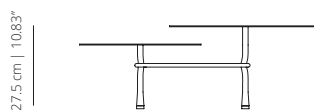
**T1ABRO | T1AB**

stained low table model A | lacquered low table model A



**T1BBRO | T1BB**

stained low table model B | lacquered low table model B



## FINISHES

### STRUCTURE

#### Laquered



white  
RAL 9003



black  
RAL 9005

### TOP

#### Laquered



white  
RAL 9003



black\*  
RAL 9005



grey  
RAL 7004



smoke  
RAL 1019



tobacco  
RAL 8028



silver  
RAL 9006



red  
RAL 3001



moustard  
RAL 1012



green  
RAL 6007



blue  
RAL 5024



sand  
NCS 3005Y50R



bronze

#### Stained



matt oak



cognac



wenge



ash

*\*The whole range of colours has a smooth lacquered finish except black, which has a lacquered microtextured finish.*

## TECHNICAL INFO

**Structure** – calibrated powder coated steel tube in thermoreinforced polyester in white or black.

**Table top** – MDF lacquered in the finishes of our collection or veneered in matt natural oak, cognac, ash or wenge. Transparent injection polypropylene tips.

In origin the piece has the same colour everywhere. In case of bicolor option, you must consider the superior price category.

*NOTE 1: If one of the black lacquered tops is ordered, the other top will also come with a microtexturized finish.*

*NOTE 2: Due to the fact that the wood used is natural, the finish may vary.*



**viccarbe**